

# PANGBOURNE CLUB



## PANGBOURNE VILLAGE MAGAZINE

Issue 5

March/April 2025



Village News  
Church News  
Nearby News

Local Organisations  
Education  
Environmental News

Parish Council News  
Pangbourne History  
Crossword

Rosewood Hall, Whitchurch Road, Pangbourne, Reading, RG8 7BS

[www.pangbourneclub.co.uk](http://www.pangbourneclub.co.uk) • Visit us on Facebook • [e: magazine@pangbourneclub.co.uk](mailto:magazine@pangbourneclub.co.uk) • t: 0118 9842885



*At PR Motors...*

# We work on **ALL** cars, vans and campers

**(Up to 3.5 tonnes)**

Featuring **GRAHAM**, Technician  
and MOT Tester at PR Motors



**Collection and  
delivery service  
available**

**Email: [enquiries@prmotors.biz](mailto:enquiries@prmotors.biz)**

**Web: [prmotors.biz](http://prmotors.biz)**

**Tel: 0118 984 4889**



Opening times: **Mon-Fri: 7:30am - 5:30pm**

## CONTENTS

From the Editor .....	5
Pangbourne Parish Council News .....	6
Church News .....	14
Pangbourne Village News .....	18
Education .....	22
Pangbourne History .....	26
Local Organisations .....	30
Social Calendar .....	40
Crossword .....	43
Environmental News .....	45
Nearby News .....	51
Useful Numbers .....	54

## SUBMISSION OF ARTICLES AND ADVERTS

	COPY DEADLINE	DISTRUBUTED
ISSUE 6 May/June 2025	1st of April	1st of May
ISSUE 7 July/August 2025	1st of June	1st of July

Please send all the submissions to: [magazine@pangbourneclub.co.uk](mailto:magazine@pangbourneclub.co.uk)

*Distribution Lucy Bromage - 07747 056193*

\*Please note - payment is required in full prior to publication.

\*We reserve the rights to exclude the articles if they breach our policies - more information via email.

Pangbourne club and the Editor have made every effort to ensure that the information in the Pangbourne Village Magazine is accurate, the opinions expressed in the newsletter are those of the contributors and not those of Pangbourne Club or the Editor.

Pangbourne Club and the Editor will not accept any responsibility for any errors or for any consequences of any errors that may occur.

Pangbourne Club takes care to ensure that the articles and advertisements are from reliable and trusted sources, readers are advised to take precautions before entering into any agreement.

Articles or information in the Pangbourne Village Magazine may not be copied or reproduced in any other publications without the prior consent of the Editor, Pangbourne Club and the Committee Officers of Pangbourne Club.

Editor - Alise Petrovska • Design and Artwork - Mike James  
Printed by Albry Printing Co Limited - [print@albry.co.uk](mailto:print@albry.co.uk) - 01491 836282



EQcare.org



## Cedar Lodge

Whitchurch-on-Thames, South Oxfordshire

E: [enquiries@bracebridgecare.org](mailto:enquiries@bracebridgecare.org)

T: 03333 447 510

### Welcome to Our New 45-Bed Care Home in Whitchurch-on-Thames

Nestled in the charming village of Whitchurch-on-Thames, South Oxfordshire, our newly built care home offers a beautiful blend of modern comforts and classic character. Preserving the original building's lovely facade, this 45-bed residence provides a warm, welcoming place for individuals seeking a vibrant, fulfilling lifestyle with the highest quality of care.

#### Your Room, Your Space

Each of our spacious, en-suite bedrooms is crafted to the highest standards, combining stylish design with cozy, personal touches. Every detail has been carefully curated to ensure comfort and tranquillity, creating a place that truly feels like home.

#### Purposeful Living, Beautiful Surroundings

More than just a home, this residence is designed to foster meaningful connections and purposeful living. We offer spaces that encourage engagement and enjoyment, from communal lounges to quiet corners perfect for reading. Our landscaped garden is fully accessible, inviting residents to spend time outdoors, relaxing in nature or taking a gentle stroll among the flowers.

#### Exceptional Care with Heart

Our dedicated team, selected for their emotional intelligence and compassion, is here to provide exceptional care every day. They bring

warmth, patience, and a deep commitment to each person's well-being, fostering a supportive and joyful atmosphere where everyone feels valued and respected. We support people who live with dementia and other conditions that may need the help of a nurse and care team. Our approach is of inclusivity and support – always.

#### A Community of Care Partners

We believe that family is essential, and we welcome family members and care partners to visit any time. Pets are family too, so dogs are also welcome to join in the experience! Our community is a place for meeting like-minded people who share a love for life, embracing each day with enthusiasm and joy.

#### Dining with Delight

All our meals are homemade, tailored to suit every taste and accommodate all dietary needs. Whether savouring a comforting classic or trying something new, people (including the team) enjoy flavourful, nutritious meals prepared with care.

#### Live Your Way, Every Day

Here in Whitchurch-on-Thames, our care home is more than a place to live – it's a place to thrive. With inviting spaces, thoughtful design, and a community centred on great living, you can enjoy life to the fullest, in your way, every day.

Welcome home.

Hello everyone,



**W**ith spring arriving and the sun showing its face, I feel the need to be outside more. It's time to wash my winter duvet and put away my woolly socks. Not my wellies though – I'm still in Britain, not Spain. I'll enjoy more walks to clear my thoughts while experiencing the sights and smells of nature waking up in all its glory at the meadows and look at the flowers blossoming outside Collins. Time to get in the garden and build a greenhouse.

But it's still nice to have an evening on the sofa, while the last bit of sunshine is shining in and reading some interesting articles. For instance, could you ever believe that the story of Led Zeppelin started in our little village? (page 26) What an intriguing story that is!

And there's more to read about how much our own local organizations achieved over the festive period. Starting with the Rotary Club raising a whopping £8000 (page 31) and our Thursday Club having a festivity-filled December (page 37). All that and much more to read in this issue.

Don't forget to pick up your maps for the annual Pangbourne Valley Pre-school duck hunt, starting on the 4th of April. Enjoy a delightful walk with your little ones.

Happy Easter, everyone!

Alise Petrovska



## SPB STONEMWORKS LTD



Tel: 01189371827 or 07971881504  
Visit us @ [www.spbstoneworks.co.uk](http://www.spbstoneworks.co.uk)  
Email: [simonbeale@spbstoneworks.co.uk](mailto:simonbeale@spbstoneworks.co.uk) or [admin@spbstoneworks.co.uk](mailto:admin@spbstoneworks.co.uk)

Special offers on all types on memorials from Headstone, Full memorials, Cremation stones, Childrens memorials & Vases  
**FREE NO OBLIGATION QUOTES and FREE FULL COLOUR BROCHURE ON REQUEST**



- MONUMENTAL STONE MASONS.
- SUPPLYING ALL TYPES OF MEMORIALS & HEADSTONES
- 30 YEAR GUARANTEE ON ALL NEW & REPAIR WORK
  - MEMBERS OF BRAMM, NAMM, AND THE GUILD OF MASTER CRAFTSMEN
- RENOVATIONS & CLEANING OF EXISTING MEMORIALS
  - ADDITIONAL INSCRIPTIONS ALL STYLES
  - REPAIRS & RE-LEVELLING
- FAST & FRIENDLY FAMILY RUN COMPANY



***Up to 70% Cheaper than Funeral directors  
with 100% Guarantee to beat any memorial quote***  
***Showroom by appointment***

Unit 3 Old Mill Trading Estate, 61 Reading Road, Pangbourne RG8 7HY



Would you like to advertise in the Pangbourne Magazine  
please contact us :Call: 0777 8900 796  
Email: [magazine@pangbourneclub.co.uk](mailto:magazine@pangbourneclub.co.uk)



**Pangbourne Parish Council**  
Tel: 0118 9841118 Email: Clerk@pangbourne-pc.gov.uk Website: www.pangbourne-pc.gov.uk

**Dates for your Diary**


**Pangbourne Litter Pick**  
Sunday 27th April



*Come and help at Pangbourne's Annual Spring Clean!*

**10am - 12pm**  
Meet at Chiltern Walk (next to Asda Garage) for registration and equipment

Operated by  
**PANGBOURNE PARISH COUNCIL AND PAWS**  
Supported by West Berkshire Council

**Annual Parish Meeting**  
**Tuesday 29th April 2025**  
7.30pm at Pangbourne Village Hall  
Refreshments from 7pm

Please do join the meeting and hear updates from local community groups and the Parish Council and have an opportunity to have your say.

Meet the Parish Councillors  
Groups and organisations presentations  
Chance to have your say in future projects  
Open Forum to ask questions

**ALL** Residents of Pangbourne Parish are entitled to attend - please do.  
For more information or to be involved please contact Becky Elkin  
Clerk@pangbourne-pc.gov.uk

Ian Walker Chairman Pangbourne Parish Council

**Pangbourne Litter Pick Sun 27th April 10am-12pm CHILTERN WALK**  
**Annual Parish Meeting of residents Tues 29th April 7-9.30pm VILLAGE HALL**

**Councillor Vacancy**



**Pangbourne Parish Council**  
Parish Office, Pangbourne Village Hall, Station Road  
Pangbourne, Berks RG7 7AN. Telephone: 0118 984 1118  
Email: Clerk@pangbourne-pc.gov.uk Website: www.pangbourne-pc.gov.uk

**VACANCY FOR COUNCILLOR**

**IF YOU CARE ABOUT WHERE YOU LIVE AND ARE PASSIONATE ABOUT YOUR COMMUNITY, WE NEED YOU.**  
**JOIN US AND MAKE A LOCAL CHANGE**

There are currently vacancies for councillors on Pangbourne Parish Council  
The Parish Council:  
\* Comprises 11 Councillors  
\* Meets on the second Tuesday every month (except August)  
There is a real opportunity to make a difference at a very local level!



Applications are welcomed.  
If you are interested in becoming a parish councillor or would like more information, please contact the Clerk via the contact given above.

**Want to make a difference?** To help shape the village we all live in?  
Have a few hours to spare?  
Have a burning idea you'd like to see through?  
Have skills in Land Management, Legal or Financial knowledge, Policy and Process or Project Management?  
You could be just the person we are looking for...  
Pangbourne Parish Council has one remaining vacancy for a Councillor. We are a medium sized first tier council, operating at a time of ever increasing devolution and a changing landscape for local government.

We own and manage:  
Pangbourne River Meadows  
Pangbourne Recreation Ground  
Chiltern Walk  
Pangbourne Hill Cemetery  
Pangbourne Village Hall  
Pangbourne Allotments  
Toilets and Playgrounds  
...and much more

Please do get in touch with the Clerk if you would like to know more...

## Parish Council Grant Awards 2025

**T**he Parish Council have limited funds available each year for grants to groups, charities and organisations within the Parish that meet certain criteria.

The Parish Council would like to invite applications for 2025//26 Financial Year from local groups that meet these criteria to fund projects for the benefit of the residents of Pangbourne.

Applications should be received by 1st April 2025, although it is possible that applications received after this date may be considered in a second round of grants in September if there are funds remaining.

Please see the website or contact the Clerk on [Clerk@Pangbourne-pc.gov.uk](mailto:Clerk@Pangbourne-pc.gov.uk) for further information or an application form.

In previous years the Parish Council has been able to help fund a number of projects including grants to Pangbourne Fete , Pang Valley Playgroup, Fopps, Pangbourne Tennis Club, Pangbourne Bowls Club, Pang Valley Flood Forum, Pangbourne Dementia Friends, PAWS Asian Hornet monitoring, support for the continued operation of the Public Toilets at Station Road Carpark, Pangbourne Library and the 143/93 Bus Service as well as a number of smaller charities.



## Assistant Clerk Vacancy

**S**adly one of our much valued team is moving on to pastures new at the end of March and so we are in need of a new Assistant Clerk. Please contact the Clerk on [belkin@pangbourne-pc.gov.uk](mailto:belkin@pangbourne-pc.gov.uk) in the first instance for more information.



### **Pangbourne Parish Council**

Parish Office, Pangbourne Village Hall, Station Road  
Pangbourne, Berks RG8 7AN. Telephone: 0118 984 1118  
Email: [Clerk@pangbourne-pc.gov.uk](mailto:Clerk@pangbourne-pc.gov.uk) Website: [www.pangbourne-pc.gov.uk](http://www.pangbourne-pc.gov.uk)

An opportunity has arisen for a part time assistant Clerk.  
Parish Council is looking to recruit a highly motivated, enthusiastic and community focussed person to join the team.

### **Assistant Clerk to the council**

20 hrs per week including some evening work  
Salary in the range SCP-21 Subject to experience  
Holiday in line with NJC  
Local Government Pension Scheme

This is a very busy, interesting and varied role where no two days are the same. The successful applicant will have strong computer skills and be able to demonstrate excellent administrative and communication skills as well as being able to plan and manage their workload to meet deadlines. They will need to be proactive and motivated and able to demonstrate an ability to work constructively, independently and accurately with a wide variety of stakeholders

Full details on the website  
Or please contact the Clerk on [belkin@pangbourne-pc.gov.uk](mailto:belkin@pangbourne-pc.gov.uk) for more information

**Closing date Fri 14th March 2025**

## Parish Council Precept and Budget 2025-26

BUDGET (vat inc)	£321,368
PRECEPT	£232,228
BAND D PER YEAR (approx.)	£146.29
BAND D PER WEEK (approx.)	£2.81

**T**he Parish Precept is the amount collected by West Berkshire Council on behalf of Pangbourne Parish Council from local residents in order to deliver services within the Parish of Pangbourne.

This year's Precept for 2025/26 has now been set at £232,228 although the total Expenditure Budget for the council for the year is higher £321,368. The remainder of the funds required to meet this budget are made up of other income from the Village hall and amenities plus other sources of funding and the monies apportioned to the Council as Developers Contributions (CIL funding), Grants, Allotment and Cemetery fees and so on.

## PSPO – Public Spaces Protection Order

**F**ollowing on from a first stage public consultation last autumn, TVP Neighbourhood Team have now formally asked West Berkshire Council to start the application process for a Public Spaces Protection Order for Pangbourne Meadows and Recreation Ground between April and October each year. As part of this process another round of formal public consultation will take place in the very near future as it is hoped that , if successful, the Order might be in place for this summer. Pangbourne Parish Council fully supports this application due to the repeated and ongoing anti-social behaviours we often experience at these locations during the summer months. A temporary Order was in place for a few days last summer which helped calm some of the behaviours and it is hoped that a permanent order will give the powers they need to keep the area pleasant and safe for all.

More details of the Order will follow when the formal public consultation begins and we will share these on our website , noticeboards and social media – watch this space and have your say!

Sadly, due to increased incidents of anti- social behaviour and the littering of drug paraphernalia, residents of Riverview Road have proposed to reinstate a locked gate at the top of the steps to the private path between the Railway Station and Riverview Road. This will be installed in the coming weeks. This has always been a private path, and residents regret the inconvenience that closing this will cause to those who have used it unofficially over recent years.



Would you like to advertise in the Pangbourne Village Magazine?

For more information and prices please contact us :

Call: 0777 8900 796

Email: [magazine@pangbourneclub.co.uk](mailto:magazine@pangbourneclub.co.uk)

Deadline for Articles and Adverts are indicated on page 5

Please send all the submissions to: [magazine@pangbourneclub.co.uk](mailto:magazine@pangbourneclub.co.uk)



## WBC- expanded Kerbside Recycling

In January West Berkshire Council made the following announcement regarding their expanded kerbside recycling collections :



*"An expanded kerbside recycling collection service has started this week.*

*In response to public feedback, certain plastic pots, tubs, and trays can now be included with your regular recycling - making it easier than ever to recycle everyday items.*

*Alongside plastic bottles, cans, and aerosols, residents can now recycle items such as clear yoghurt pots, spread tubs, clean ready meal trays (without film lids), and fruit punnets (without film lids). Communal bin users can also dispose of these items in the red-topped wheelie bins.*

*To ensure recyclability, please rinse items and remove any plastic film and lids before placing them in your recycling bag. Need more space? Squash plastic*

*bottles to make room.*

*We're pleased to be able to launch this new service over a year ahead of the Government's Simpler Recycling deadline, thanks to the work our waste team have done in partnership with Veolia.*

*Together, let's reduce waste, enhance recycling, and create a brighter, greener future for West Berkshire."*

The new kerbside collection will make it much easier for residents to send their plastic waste to recycling and recovery. Alongside plastic bottles, cans and aerosols, residents can now add certain clean plastic pots, tubs, and trays to their recycling bags for collection. This includes items such as clear yoghurt pots, spread tubs, most ready meal trays, and clear fruit punnets. Residents with communal bins, will also be able to dispose of these items in the red-topped wheelie bin.

### Accepted Items:

- Cream pots (without film lids)
- Clear yoghurt pots (without film lids)
- Spread/margarine tubs
- Biscuit tray packaging
- Takeaway tubs and ready meal trays (without film lids)
- Clear fruit trays (without film lids)
- Clean meat trays (without film lids)

### We cannot accept:

- Black plastic trays
- Plastic film - such as bread bags and tray coverings
- Crisp packets
- Plastic wrapping
- Foil lids and trays
- Flowerpots
- Hot beverage pods (please take these to your nearest Household Waste Recycling Centre)
- Tetra Paks/cartons (these can be recycled at our mini recycling centres and Household waste recycling centres)
- Blister packs/pill packets

If the plastic tray or tub still has food waste on it, or it still has a plastic film or metal covering, it can cause a problem as it goes through the recycling process. This makes it unsuitable for reprocessing meaning that it won't be recycled. We politely ask residents to rinse items and remove any film or cardboard sleeves before placing them in the recycling bags. Cardboard sleeves can be placed in the paper/cardboard box. To make more space in your recycling bag, items such as plastic bottles can be squashed to expel air before placing them in your bag.

If, after following the above, you still need an additional bag to present your plastic bottles, pots, tubs, trays, food and drink cans, and aerosols for collection, you can order one here: [www.westberks.gov.uk/requestabin](http://www.westberks.gov.uk/requestabin).

### WBC -Kerbside Battery Collections



**L**ast September saw the introduction of kerbside battery collections - it's great to see our residents now utilising this service. We would like to remind residents to please NOT place batteries (INCLUDING VAPES) inside any of their bins.

Residents just need to follow these simple steps:

**Batteries:** Veolia's collection team will collect the most common household batteries, including D, C, AA, AAA, AAAA (1.5-volt), A23 (12-volt), PP3 (9-volt), CR2032 (3-volt), and LR44 (1.5-volt).

**How to recycle:** Place your used batteries in a clear bag, like a freezer or sandwich bag, and simply place it on top of your black wheelie bin on collection day. Our new waste collection vehicles have special compartments designed just for these batteries, ensuring they're safely recycled.

**Safety first:** Please remember, batteries should never be placed inside your wheelie bin. Doing so can cause them to ignite during the waste compaction process, posing a significant fire hazard.

**Exceptions:** While we'll gladly collect most household batteries, there are some exceptions: Car/moped batteries, lithium-ion (Li) power tool batteries, and vapes, should continue to be taken to our household recycling centres at Newtown Road, Newbury, or Padworth. To schedule a visit, book an appointment online.



### Discover Pangbourne Library



*Join your local library it is completely FREE, with access to books, including large print format, quick reads, CD audiobooks, non-fiction and fiction, for adults and children, the library service also offers the following:*

- **Free Libraries App:** Easily access your account, search the catalogue, renew, reserve, and check out books.
- **Free Computer Use and Wi-Fi**
- **Free Access to E-Books, E-Magazines, and E-Newspapers** e-Books, e-audiobooks, e-magazines and e-newspapers - *West Berkshire Council*
- **Audiobooks and E-Audiobooks:** Enjoy listening on the go.
- **Wellbeing Bags:** Activities to support health and well-being.
- **Children's Events:** Online and in-person activities such as Rhymetime every Thursday, Lego Club, craft events, and the Summer Reading Challenge.
- **Library Events:** Coffee and Craft, Book groups and more, visit Library Events to see what we have scheduled.
- **Self-Service Printing and Photocopying:** Plus free scanning to email.
- **Book Groups:** Hundreds of titles available in sets of 10 copies (annual fee applies).
- **Family and Local History Resources:** Online resources and Monthly Family History Session
- **Online Resources:** All available free of charge.

If you are unable to visit the library, then find out about our At Home Service, *Mobile Library and At Home Service - West Berkshire Council* and we will bring the books to you!

For more details, including current library opening hours, *Pangbourne Library - West Berkshire Council* or for more information about any of our services visit [www.westberks.gov.uk/libraries](http://www.westberks.gov.uk/libraries).



## RECENTLY RENOVATED DETACHED HOME IN CENTRAL PANGBOURNE

JUST STEPS AWAY FROM THE BUSTLING HIGH STREET

Whether you are looking to downsize from one of the surrounding villages or perhaps need a little more space and yet have everything on your doorstep, this beautifully presented home offers an exceptional blend of modern luxury and classic charm.

Approached via a private gated entrance, the property sits in a desirable position and offers spacious and stylish interiors, beginning with a grand entrance hall and striking glass-balustrade staircase.

The ground floor features a bright dual-aspect living room, a further versatile reception space, and a beautifully designed kitchen/family room with a feature island, integrated appliances, and French doors leading to the garden.

Upstairs, four generous bedrooms include a luxurious principal suite with a wet room, a guest suite with an en-suite, and an open-plan study area.

Outside offers a great-sized patio for alfresco dining, and the tranquil River Pang creates a picturesque setting.

With ample parking and a 10-year Build Zone Guarantee, this is a rare opportunity to acquire a property in such a sought-after central location in Pangbourne.



**Parkers Prestige is a specialist service for exclusive homes in the south of England.**

Designed for distinctive properties that offer something extra – whether it's a large plot of land, extensive custom builds or period charm – our team delivers the extra care and attention your property deserves.

After all, your property is more than just bricks and mortar – it's somewhere you've spent time and built memories.

We understand this completely and will devote the extra care and attention needed to bring your property to market.



Scan the QR code to find out more

PLANNING APPLICATIONS REVIEWED SINCE LAST ARTICLE

<i>APPLICATION NUMBER</i>	<i>PROPOSAL</i>	<i>Recommendation</i>
24/02289/HOUSE	Modifications to existing windows and dormer windows to front and rear of dwelling. New rooflight in lieu of dormer to front of dwelling. New aluminium framed louvered pergola to rear of dwelling. Replacement rooflights to rear of dwelling. <b>Larkspur, 5 Breedons Hill, Pangbourne, Reading RG8 7AT</b>	<i>No objection</i>
24/02290/LBC 24/02287/ADV	Installation of replacement signs to include 2x new pictorial panels to the existing post signs, 2x sets of externally illuminated sign written house names and repainting to the exterior render and windows. <b>The Swan Hotel, Shooters Hill, Pangbourne, Reading RG8 7DU</b>	<i>No objection</i>
24/02416/HOUSE	Convert the existing coach house into habitable accommodation <b>11 Thames Avenue, Pangbourne, Reading, RG8 7BU</b>	<i>Objection</i>
24/02404/HOUSE	Single storey rear kitchen extension <b>Rookwood, Thames Avenue, Pangbourne, Reading RG8 7BU</b>	<i>No objection</i>
24/02451/FUL	Section 73a Variation of Condition (10) Approved Plans of approved application 22/00056/FUL: First floor extension to building with mansard roof. Minor alterations to permitted scheme shell including new and altered window positions. <b>Churchill Island, Tidmarsh Road, Pangbourne, Reading RG8 7BB</b>	<i>No objection</i>
24/02740/HOUSE 24/02741/LBC	Replacement single storey rear extension, new 2nd storey rear extension, internal alterations, replacement garage building with office above <b>55 Shooters Hill, Pangbourne, Reading, RG8 7EA</b>	<i>No objection</i>
24/02781/LBC	Removal of resin applied detailing to Stairwell (RG06-RF11) and Inner Entrance Hallway (RG12) to allow repair and stabilisation of the plaster <b>Bere Court, Bere Court, Pangbourne, Reading RG8 8HT</b>	<i>No objection</i>

WBC DECISIONS SINCE LAST ARTICLE

<i>APPLICATION NUMBER</i>	<i>PROPOSAL</i>	<i>WBC Decision</i>
24/01908/HOUSE	Installation of an EV charge point <b>45 Kennedy Drive, Pangbourne, Reading, RG8 7JP</b>	<i>Approval</i>
24/02011/NONMAT	Application for a Non-Material Amendment Following a Grant of Planning Permission 22/00056/FUL - First floor extension to building with mansard roof. Minor alterations to permitted scheme shell including new and altered window positions. Amendments: - Altered window positions on front, side and rear elevations including reduction,- Altered rooflight positions,- Minor Altered internal partitioning. Change windows to heritage flush casement type; color change with flying mullion design including entrance doors <b>Churchill Island, Tidmarsh Road, Pangbourne, Reading</b>	<i>Withdrawn</i>
24/00641/HOUSE 24/00642/LBC	To create a garden, by reinstating the original brick and flint wall, erecting a green house, cycle store, driveway with car port. <b>45 Shooters Hill, Pangbourne, Reading, RG8 7EA</b>	<i>Refused</i>

WBC DECISIONS SINCE LAST ARTICLE

24/01576/HOUSE (adjacent parish)	Single storey side extension to create a utility room. Remove the existing flat roof over the single garage. Erection of new pitched roof over garage. Ground floor front extension to form covered entrance porch. Enlarged windows at first floor front and rear. Horizontal cladding on front and rear gable walls. New white render. <b>Wisteria Cottage, Newtown, Upper Basildon, Reading RG8 8JG</b>	<i>Approval</i>
24/01346/HOUSE	Demolition of existing rear conservatory and construction of single storey, wrap around extension <b>17 Thames Avenue, Pangbourne, Reading, RG8 7BY</b>	<i>Refused</i>
24/02240/HOUSE	Proposed Carport and Shed <b>Hadleigh House, Courtlands Hill, Pangbourne, Reading RG8 7BE</b>	<i>Approval</i>
24/02224/HOUSE	Single storey side extension <b>4 Breedons Hill, Pangbourne, Reading, RG8 7AT</b>	<i>Approval</i>

# HELLO

**FEEL FREE TO CONTACT US TO DISCUSS YOUR HEATING AND PLUMBING NEEDS!**



**OUR SERVICES**

- Boiler Installation
- Air Source Heat Pumps
- Central Heating Systems
- Underfloor Heating
- Hot Water Cylinders
- Boiler Servicing
- General Plumbing
- Water Softeners
- Power Flushing
- Landlord Safety Certs



Call: 0118 212 0586 | [www.jlgas.co.uk](http://www.jlgas.co.uk) | email: [info@jlgas.co.uk](mailto:info@jlgas.co.uk)

**RELIABLE:** We will turn up on time and always communicate efficiently. We always keep you informed.



**REDUCING YOUR CARBON FOOTPRINT:** We are passionate about the environment and here to help reduce your carbon footprint along with saving on your energy bills.



**CLEAN:** We always tidy up and leave your house as clean as it was when we arrived.



**5 STAR SERVICE:** Our reputation is something we take great pride in. Which is why we offer a 24 month workmanship guarantee.



**FAMILY RUN:** We are emotionally invested. So we take great pride in delivering the best service with a personal touch.



**BRANDS:** We only offer the best brands on the market. Atag boilers offer up to 18 years warranty with a lifetime guarantee on heat exchangers, so you can rest easy and stay warm.





**Why choose us?**

- We're fully insured for your peace of mind ✓
- Enjoy the confidence of our 5-star Google rating ✓
- We're your friendly and reliable local experts, always ready to help! ✓



Get in touch for a no-obligation quote now:  
**0772 332 6635**  
**0118 348 6041**

**Our Services:**

- Roof de-moss & Treatment
- Gutter Cleaning & Repair
- Render Cleaning
- Pressure Washing
- Patio/Decking Cleaning
- Window Cleaning
- Fascias & Soffits
- Conservatories
- Solar Panel Cleaning



www.berkshireexteriorcleaning.co.uk / Contact@berkshireexteriorcleaning.co.uk



### CHURCH SERVICES

St James | St Laurence | St Nicholas

#### MARCH

##### Sunday 2<sup>nd</sup>

10 am	Holy Communion	St James
11.15am	Holy Communion	St Laurence

##### Sunday 9<sup>th</sup>

7.45am	Holy Communion (BCP)	St James
10am	All Together Worship	St James

##### Sunday 16<sup>th</sup>

9am	Joyful Noise Breakfast Service	St James
10am	Holy Communion	St James
11.15am	Morning Worship	St Nicholas

##### Sunday 23<sup>rd</sup>

7.45am	Holy Communion (BCP)	St James
10am	Holy Communion	St James

##### Mothering Sunday 30<sup>th</sup>

10am	Holy Communion	St James
------	----------------	----------

#### APRIL

##### Sunday 6<sup>th</sup>

10 am	Holy Communion	St James
11.15am	Holy Communion	St Laurence

##### Palm Sunday 14<sup>th</sup>

7.45am	Holy Communion (BCP)	St James
10am	All Together Worship	St James

[See details of Holy Week and Easter services overleaf](#)

##### Easter Sunday 20<sup>th</sup>

5.15am	Daybreak Service	Meet in Rectory Garden with Holy Communion in St James followed by breakfast
--------	------------------	--

10am	Family Communion	St James
11.15am	Family Communion	St Laurence
11.15am	Family Worship	St Nicholas

***Easter Egg hunt for children at each service***

##### Sunday 27<sup>th</sup>

7.45am	Holy Communion (BCP)	St James
10am	Holy Communion	St James

##### Midweek Holy Communion

10am every Wednesday morning in St James

[www.pangbournechurches.org](http://www.pangbournechurches.org)

### LETTER FROM REVD MARK HOPKINS

Dear Friends,

This year, in the Western Church Calendar, Easter Sunday falls on 20th April, which is nearly as late as it can be. The latest it can be is 25th April, which it will next be in 2038, and the earliest is 22nd March, which it will next be in 2085. For those who like astronomy, it can roughly be worked out each year as the first Sunday after the first full moon after the Spring (Vernal) Equinox, which is around 21st March.

The lateness of Easter means that this year the season of Lent, the 40 day period before Holy Week and Easter, falls entirely within the months of March and April. The word Lent comes from the Old English "Lencten", a word for Spring connected with "lengthening", as Spring is when the days get longer. But the French word "lent" meaning "slow" also seems appropriate. Lent is a long, slow season, where traditionally we give something up, but also take time out to slow down and consider our lives. Traditionally that meant repentance and fasting, but nowadays it is connected more with self-discipline (giving up that extra chocolate bar or glass of wine perhaps).

In the Early church, Easter Day was a time when many Christians were baptised, so Lent was a time of preparation for baptism. Today, many Christians continue to be baptised at Easter or renew their baptism promises then. The weeks following Easter often involve preparation for confirmation, when Christians make public commitments to their faith in the presence of a bishop, after which they often take their first Holy Communion.

In Pangbourne, Tidmarsh and Sulham, during March and April, we will be holding Lent Lunches, a time for conversation whilst eating a simple soup lunch. We will also have a weekly course running to explore themes of Lent. In May, we hope to run classes for those teenagers and adults seeking to be confirmed, or those who aren't wanting to take this step, but would be interested in exploring the Christian faith further. Please be in contact if this is of interest to you.

God bless,  
Rev Mark

## The Parish of Pangbourne with Tidmarsh and Sulham



### Monday to Wednesday 14th to 16th April

Compline 10pm St James

### Maundy Thursday 17th April

Holy Communion 8pm St James

Compline 9pm St James

### Good Friday 18th April

Family Worship 10am St James

Meditation 2pm St James

### Easter Sunday 20th April

Daybreak Service 5.15am Meet in Rectory Garden with Holy Communion in St James followed by breakfast

Family Communion 10am St James

Family Communion 11.15am St Laurence

Family Worship 11.15am St Nicholas

**Easter Egg hunt for children at each service**

## WHAT'S ON IN THE PARISH

### WELCOME TO THE NEW BISHOP OF READING

We welcome the new Bishop of Reading, The Right Reverend Mary Gregory.

A special service of celebration will take place in Reading Minster on Sunday 2nd March at 3pm. All are welcome to attend.

### LENT LUNCHES

Come and enjoy a light lunch on Wednesdays in Lent.

**12, 19, 25 March and 2, 9 April.**

12 – 1.30pm in St James, Pangbourne

Donations to Christian Aid



### FULL REVISION OF CHURCH ELECTORAL ROLL

A new Church Electoral Roll (ER) is compiled every six years, and it is due for revision this year. This means that everyone currently on the roll will be removed, and anyone who wants to be added—including those not previously on the roll—will need to reapply.

A notice about the revision of the ER will be displayed outside all three parish churches. If you'd like to be included on the new roll, please complete a form, which you can access by scanning this QR code or by picking one up from St James, St Nicholas, or St Laurence churches.



Forms must be returned by 11th March, by email to [office.ptschurches@gmail.com](mailto:office.ptschurches@gmail.com) or by post to Electoral Roll Officer, 2 Willowmead, Kennedy Drive, Pangbourne RG8 7LB.

### OASIS BEREAVEMENT GROUP

Being bereaved can be a lonely and isolating time, and the road to adjusting to the new 'normal' can be tough. If this is your experience, we invite you to join our informal self-help meet-up bereavement group – **OASIS** – which gets together on the fourth Thursday of each month, 2pm-3.30pm in the **Trunk Room** at the **The Elephant Hotel** in Pangbourne. The group is open to anyone in our local community who has suffered any sort of bereavement at any time and finds yourself still coming to terms with the impact this is having on your life. We meet for gentle conversation, hot drinks and company, safe in the knowledge that everyone else in the group has some insight into what you are going through. Please note that although it is run by PTS Churches, and as such our Christian faith underpins our care for others, there is no explicit religious content so the group is suitable for people of all faiths, or none.

For more information, contact Rev Rachel on: [curate.ptschurches@gmail.com](mailto:curate.ptschurches@gmail.com) or 0118 3320086

### CONFIRMATION CLASSES

In May, we plan to offer classes for teenagers and adults who are interested in being confirmed, as well as for those who may not be ready for confirmation but would like to explore the Christian faith further. If this interests you and you'd like to find out more please email the rector at [rector.ptschurches@gmail.com](mailto:rector.ptschurches@gmail.com)



# HEARTFELT THANKS TO OUR COMMUNITY

We would like to extend our deepest gratitude to all the local community members and guests who have visited us since we opened our doors on Friday, 13th of December.

We are over the moon that everyone loves our new look as much as we do.

Your support and appreciation have meant the world to us.

We truly felt the love and support, and for that, we say  
thank you from the bottom of our hearts!



## Celebrate Mother's Day at The Swan

Celebrate the extraordinary mother figure in your life with an unforgettable visit to The Swan this Mother's Day. Show her how much you care with our specially curated three-course set menu, designed to delight and impress.

Indulge in a selection of exquisite dishes, such as our lobster thermidor crumpet, the refreshing pink grapefruit salad, or one of our ultimate roast dinners.

Each dish is crafted with love and attention to detail, ensuring a memorable dining experience.

Book a table today to join us on the 30th of March, to celebrate that special lady in your life.

All mums who dine with us on Mother's Day will enjoy a complimentary Lillet Rose Spritz, adding a touch of elegance to the occasion.

Make this Mother's Day truly special with a celebration at The Swan.  
We look forward to welcoming you and making it a day to remember.

Much love,  
Anna

To book your table at the Swan, please email [info@swanpangbourne.co.uk](mailto:info@swanpangbourne.co.uk)  
or telephone: 0118 984 4494

Shooters Hill, Pangbourne, Reading RG8 7DU



# Lent and Easter at St Bernadette's



**Sunday Mass** (with Children's Liturgy)  
9:45am Every Sunday, followed by tea

**ASH WEDNESDAY 5<sup>th</sup> March**  
Mass at 7 pm – to mark the start of Lent

**Friday Stations of the Cross**  
Join us for a prayerful Lenten reflection.  
At 12 noon on the following Fridays:  
14<sup>th</sup> March, 28<sup>th</sup> March and 11<sup>th</sup> April

**Friday LENT LUNCH**  
All welcome for a tasty bread & soup  
lunch. At 12:30 pm on these Fridays:  
14<sup>th</sup> March, 28<sup>th</sup> March and 11<sup>th</sup> April

**Second Wednesday Coffee Morning**  
12<sup>th</sup> March and 9<sup>th</sup> April at 10:30 am

**GOOD FRIDAY 18<sup>th</sup> April**  
Children's Service at 10 am  
Stations of the Cross at 12 noon

**EASTER SUNDAY 20<sup>th</sup> April**  
Mass of the Resurrection at 9:45 am

All welcome on our Lenten & Easter journey!  
Catholic Church, Parish Priest: Fr Alban Hood  
Horseshoe Road, Pangbourne, 0118-971-5350

[www.douaiparish.org.uk](http://www.douaiparish.org.uk)



## Make our village bed beautiful

**T**hank you for those who responded to the article we wrote in the autumn regarding the flower bed next to the village hall car park. Several people have come forward to offer help. Some weeding, chopping and pruning has been done and one business in the village has offered some funding. But we need more. Can you help?



In the Spring we are looking to get a group together to give the village flower bed an overhaul and all help is welcome. No gardening experience necessary, just a willingness to get involved.

The sign depicting King Bertulf dates back

to 1961 and also needs substantial work to ensure its safety as well as appearance. Many people and businesses value the sign and have said that it is part of the village and important to them. But it requires funding to maintain. Perhaps you are a business in the village or an individual who wants to make a financial contribution.

If you interested in saving the sign or contributing to funds or want to help with the flower bed or even find out more about getting involved:

**Contact: [clerk@pangbourne-pc.gov.uk](mailto:clerk@pangbourne-pc.gov.uk)**

We are all volunteers who live in Pangbourne and want to keep the area looking attractive for the community and visitors alike and would welcome your support.

## Pangbourne Fete 2025

Join us for a great family day on Pangbourne Meadow



### Saturday 14<sup>th</sup> June

Live Music – Food & Drink  
Kid's Events – Charity Stalls – Displays

<https://pangbournefete.com/>

[PangbourneVillageFete](#)

[@thepangbournefete](#)



## Shaun Guard TV & WIFI SERVICES

- Aerials - supplied, repaired & poor reception solved
- Satellite - Sky Q dish upgrades, discreet dish installations
- Internet - blackspots cured, internal & external data cables installed
- TVs - hung on your wall or set up & tuned

**OXFORD AERIALS**

Call Pangbourne 01189 639113

[www.oxfordaerials.co.uk](http://www.oxfordaerials.co.uk) [shaun@oxfordaerials.co.uk](mailto:shaun@oxfordaerials.co.uk)

AWARD WINNING  
INTEGRATED MEDICINE CLINIC  
**FORMULA HEALTH**

OSTEOPATHY | SPORTS INJURY | SPORTS & REMEDIAL MASSAGE  
KINESIOTAPING | SHOCKWAVE THERAPY | EXERCISE STUDIO  
PODIATRY | 3D-PRINTED ORTHOTICS | COMPRESSION BOOTS  
NUTRITIONAL THERAPY | VITAMINS & SUPPLEMENTS  
DNA & MICROBIOME TESTS | METABOLIC ANALYSIS  
ACUPUNCTURE | REFLEXOLOGY | KINESIOLOGY  
PREGNANCY, MOTHER & BABY TREATMENTS  
HEALTH & WELLBEING PRODUCTS

0118 4181825 | [info@formulahealth.co.uk](mailto:info@formulahealth.co.uk) | [www.formulahealth.co.uk](http://www.formulahealth.co.uk) | [@formula\\_health\\_ltd](#)

19 Reading Road, Pangbourne, RG8 7LR



## Formula Health's Guide to The Vagus Nerve

**The Key to Nervous System Regulation and Stress Recovery** The vagus nerve, a vital component of our nervous system, is often referred to as the "wanderer" due to its extensive network that connects the brain to key organs, including the heart, lungs, and digestive tract. As the cornerstone of the parasympathetic nervous system, it plays a critical role in regulating rest, digestion, and recovery. Stimulating the vagus nerve has become a focal point in addressing the effects of chronic stress and restoring balance in the body.

**The Role of the Vagus Nerve in Stress and Recovery** The vagus nerve acts as a calming force in the body, counteracting the "fight or flight" response associated with sympathetic nervous system overdrive. When stress or trauma pushes the sympathetic system into overactivity, the vagus nerve can help restore equilibrium by promoting relaxation, lowering heart rate, improving digestion, and reducing inflammation. However, when the vagus nerve is underactive, symptoms like anxiety, fatigue, and poor gut health can emerge.



**Osteopathic Approaches to Support the Vagus Nerve** Certain Osteopathic techniques can effectively engage the vagus nerve by working on the structures it interacts with. These techniques are subtle, gentle, and focus on stimulating the body's natural ability to regulate itself. They include:

1. **Cranial Techniques:** Gentle techniques focused on the cranial bones can release tension around the base of the skull, where the vagus nerve exits the brainstem. This has been observed to improve its function. Recent advances in functional MRI (fMRI) imaging have shown that such subtle interventions can lead to measurable changes in neural activity and provide significant benefit.
2. **Releasing Fascial Restrictions:** Techniques to alleviate tension in the fascia, particularly around the neck and chest (e.g., thoracic inlet release), can enhance vagal tone and improve the flow of signals between the brain and the body.
3. **Improving Diaphragmatic Function:** The vagus nerve passes through the diaphragm, and freeing restrictions in this area can improve breathing patterns, reduce stress, and support parasympathetic activation.

**Self-Help Tips to Stimulate the Vagus Nerve** For those looking to support their vagus nerve, several simple practices can be incorporated into daily life:

1. **Deep Breathing:** Once your Osteopath has released the myofascial tension surrounding your diaphragm, practicing slow, diaphragmatic breathing helps to stimulate the vagus nerve and activates the relaxation response. Try inhaling (using 'belly breathing') for four seconds, holding for four seconds, and exhaling for six seconds.
2. **Cold Exposure:** Splashing cold water on your face or taking a cold shower can activate the vagus nerve, reducing stress and improving mood.
3. **Humming or Chanting:** The vagus nerve is connected to the vocal cords, so humming, chanting, or even singing can help stimulate it.
4. **Yoga and Meditation:** Practices that focus on mindfulness and controlled movement enhance vagal tone and reduce sympathetic activity.

Understanding the vagus nerve is an empowering step toward better health. Advances in neuroimaging, such as fMRI, have shown that both manual therapies and at-home practices can influence the vagus nerve and help regulate the nervous system. Whether through Osteopathic treatments or self-help techniques, stimulating the vagus nerve can provide profound benefits, including reduced stress, improved digestion, and a greater sense of calm. By incorporating these practices into your routine, you can foster resilience and enhance your overall well-being.

. Gemma Fisher M.Ost Med. – Director Formula Health Ltd

## **LIFT** We're Not an Ordinary Gym.

**A**t LIFT Pangbourne, you don't just pay to use equipment for an hour and get...

- \* No help or support.
- \* No results.
- \* People hogging the machines.

**We don't have...**

- \* Rows of treadmills.
- \* Gym posers.
- \* Exercise classes that don't get results.

Instead, we offer structured training, expert coaching, and a supportive community to guarantee your success!

**What Makes Us Different to other gyms?**

**With our 6 Week Challenge, you get:**

- \* Personalised coaching – Step-by-step guidance in small group sessions
- \* Goal-specific training – Proven programs designed to help you get leaner, fitter, and stronger
- \* Flexible nutrition support – Achieve results without restrictive diets or missing out on social events

**Here's how the challenge works and what's included...**

- \* 18 group personal training sessions where you're guided step by step and get impressive results
- \* Goal-specific training program so you can focus on what's important to you
- \* Customised nutrition targets using our flexible nutrition system. You'll never have to miss social events or follow a "weird diet" ever again!
- \* Weekly check-ins with your personal coach, so you're held accountable and never fall off the wagon
- \* Body composition scans to track your progress each week
- \* Access to our private training facility
- \* A supportive gym community of like minded people

Over the last decade, we've helped 100s of people get in the shape of their life, so we know this program works!

We're also the only gym in the area that can promise guaranteed results or your money back

The best part is that we have everything planned

out for you, so there's no guesswork involved.

All you need to do is show up and follow our advice. *(Yes, you can still enjoy pints at Pangbourne Club, pizza at Nino's, and cheese from Pangbourne's Cheese Shop, whilst still making awesome progress)*

**Here's What Our Members Have to Say**

John: "I feel far more motivated, definitely stronger, and my jeans are looser!"

Sam: "I've lost 6kg (5kg of body fat!), feel stronger, more confident, and no longer rely on wine to feel better."

Hilary: "My lower back pain is gone and I feel stronger, fitter, and mentally better."

Clare: "The small groups make it feel like personal training, and I love that the workouts focus on lifting correctly rather than competing."

Bev: "I feel challenged, proud of my progress, and love that LIFT looks at the whole picture - nutrition, strength, fitness and overall health."

LIFT is more than a gym. It's a proven system, a supportive community, and a place where you'll see real results.

Ready to transform your body and feel stronger than ever?

**Join us today by visiting [www.liftpangbourne.com](http://www.liftpangbourne.com)**



**Looking for a new Dental Practice?**

We are accepting new NHS patients



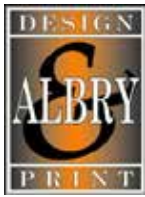
Please contact us **TODAY** to get yourself & family registered

 17 Reading Road, Pangbourne, Reading, RG87LU

 0118 9845894

 [info@dentalcarepangbourne.co.uk](mailto:info@dentalcarepangbourne.co.uk)





Albry Printing Co, based in Wallingford UK are Premier printers in Oxfordshire and providing a complete design and print service since 1971.

We pride ourselves on our quality control and reliability to ensure that our client's requirements are fulfilled.

*Albry Printing are the printers for The Pangbourne Village Magazine*



- NCR pads
- Stationery
- Posters
- Newsletters
- Brochures
- Catalogues
- Magazines

Contact us for more information:  
Tel: 01491 836282 or Email: [print@albry.co.uk](mailto:print@albry.co.uk)



*Claire Vickery*

The Pangbourne Celebrant

Your ceremony, your way  
Bespoke, hand-written, and all about your love

*Weddings ♥ Vow Renewals ♥ Funerals*  
*Ash Honouring Ceremonies ♥ Baby Naming ♥ Pet Funerals*  
*Living Funeral Ceremony Planning*



07768 245000 | [Love@AllYourLove.co.uk](mailto:Love@AllYourLove.co.uk)

T: 0118 942 9889 E: [office@chrysaliscare.org](mailto:office@chrysaliscare.org)

## Care in your own home

Quality care by local, experienced, compassionate carers



### WE OFFER

- Day and night care
- Personal Assistant Support for Adults
- Dementia care
- Home from hospital rehabilitation
- Competitive and fair rates
- All inclusive social events for our clients and family members

### BENEFITS

- Assistance with bathing, dressing, cooking and Medication etc
- One-to-one personalised Care
- Consistency of Carer
- Stay in your own Home
- Peace of mind

We are a family run, independent, experienced, Care Provider. We support Independent Living for the elderly and adults with disabilities at home.

We provide quality, person-centered, individual Care.



[www.chrysaliscareathome.org](http://www.chrysaliscareathome.org)



### A Warm Welcome from PVPS

**A**s we step into March, all of us at Pangbourne Valley Pre-School – staff, children, and families – would like to send our very best wishes to our wonderful community. With spring just around the corner, there's a real sense of excitement in the air as the days grow longer and brighter. It's a time of fresh beginnings, new opportunities, and plenty of fun events to look forward to. We're thrilled to share all the exciting happenings at PVPS with you!

#### **Helen's Head Shave & Silent Auction – A Night to Remember!**

Get ready for an unforgettable evening on 22nd March 2025 at Pangbourne Club! Our very own Helen is bravely shaving her head to raise much-needed funds for Pangbourne Valley Pre-School (PVPS).

This fantastic event will also feature a Silent Auction with incredible prizes up for grabs, and a Quiz to test your knowledge! Plus, the winning quiz team will take home a £50 voucher from The Swan at Pangbourne.

To book your place, email [pvpq.enquiries@gmail.com](mailto:pvpq.enquiries@gmail.com) or visit <https://auctionofpromises.com/AuctionForPangValleyPreSchool>.

We would love for as many people as possible to come along and support Helen in this brave challenge. Every penny raised goes directly to PVPS, helping us provide the best possible early years education for the children in our community.

#### **Valentine's Disco – A Fun-Filled Fundraiser!**

On Valentine's Day, PVPS hosted a wonderful Valentine's Disco at the Pre-School. The children had an amazing time dancing under the disco ball and enjoying delicious pizza with their friends. It was a fantastic evening full of fun and laughter, and we are so grateful to everyone who attended and supported this fundraising event. Thank you for making it such a success!

#### **What Else is Happening at PVPS?**

We have a lot to look forward to in the coming months!

Reading Half Marathon (23rd March) – Cheer on our superstar manager, Emma, as she runs to raise funds for PVPS!

**Duck Hunt (April)** – Our much-loved rubber duck

hunt along Pangbourne High Street is back for another year of family fun. Keep an eye out for more details and confirmed dates coming soon!

**Par-Tee Tots (16th April at 10:30)** – This hugely successful holiday club is back by popular demand! We were delighted to hear that our generous hosts at Goring and Streatley Golf Club won the Syngenta Operation Pollinator Award for their ecological habitat creation and management. We were pleased to have played our part as just one of the contributing projects. The children certainly enjoyed the beautiful environment and learned lots through interacting with and enjoying the nature of the woodland trail.

Thank you for your continued support – we can't wait to see you there!

#### **About Us**

PVPS has been part of the Pangbourne community for over 25 years. We're a charity-run, not-for-profit childcare setting with a small, family feel. Our goal is to provide free-at-point-of-access childcare for eligible children, creating an environment where everyone can learn, grow, and shine.

#### **Spaces Available for September 2025!**

Looking for high-quality childcare? We currently have spaces available and offer:

15/30 hours of fully funded childcare for eligible 2, 3, and 4-year-olds

Acceptance of childcare vouchers

[pvpq.enquiries@gmail.com](mailto:pvpq.enquiries@gmail.com)

0118 984 1661

[www.pvpq.org.uk](http://www.pvpq.org.uk)

#### **Get Involved**

Want to support PVPS? Here are a few ways you can help:

**Join Our Committee:** We're always on the lookout for enthusiastic new members to join our team and help shape the future of PVPS.

**Fundraise with Us:** Visit our website to find out how you can support our work:

[www.pvpq.org.uk/fundraising](http://www.pvpq.org.uk/fundraising)

[www.easyfundraising.org.uk](http://www.easyfundraising.org.uk)

[www.westberkshirelottery.co.uk/support/pangbourne-valley-playgroup](http://www.westberkshirelottery.co.uk/support/pangbourne-valley-playgroup)

### **BUY & SELL**

@ Pangbourne Village Magazine  
Would you like to buy or sell items?  
[magazine@pangbourneclub.co.uk](mailto:magazine@pangbourneclub.co.uk)



Hi all,  
It's been a busy start to 2025 for us

at FOPPS, kicking off with a new event we have introduced, school discos! The first one was held at school for all the children on the 7th Feb, and at the time of writing the team are busy co-ordinating DJs and refreshments! We look forward to seeing how it goes and hope the children enjoy it. Thank you to the disco team, Mrs Fry and school staff who have made this happen.

As a reminder of what we do, we are the PTA of Pangbourne Primary School.

We are a registered charity and we aim to build relationships between parents, carers and the school, run events and raise money for the school to buy equipment, resources and offer new experiences to all the children.

We look forward to sharing our plans for the spring and summer months in our next update, including the village fete and school sports day.

Where are funds raised heading this year? We have committed to funding over £15,000 of items and experiences this academic year. We are looking at playground renovations for both Foundation Stage and Key Stage 2 areas of the school and also:

- IT Resources
- Sports equipment and kit
- Contribution to school panto trip and funding Didcot Railway visit
- Class spend/class crafts
- Subscriptions – Doodle, Oodsizzi, Science magazine
- SEN Resources
- Library books
- Contributions to Yr4 & Yr6 residential trips
- Exercise & CGP books

**How can you help support your local primary school?**

If you would like more information or would like to get involved, help or donate, please contact us at [info@fopps.org.uk](mailto:info@fopps.org.uk).

**Have you signed up to the West Berkshire Lottery yet?**

West Berkshire Lottery is an exciting weekly lottery that raises money for good causes in West Berkshire – and FOPPS is registered as one of the causes. If you would like the chance of winning up

to £25,000 AND supporting FOPPS, all you need to do is go to the site below and purchase a ticket for just £1.

[www.westberkshirelottery.co.uk/support/fopps](http://www.westberkshirelottery.co.uk/support/fopps)

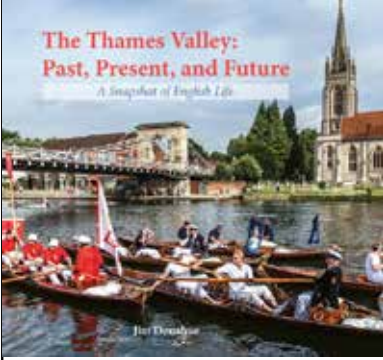
**Reduce! Reuse! Recycle for FOPPS!**

We have a textile recycling bank just inside the school playground, so if you need to dispose of old clothes, shoes or other textiles please do drop your things into the collection bank at the Reading Road school entrance.

**Easy Fundraising**

Did you know you can raise money for the school when you do your Christmas shopping? By purchasing through Easy Fundraising a % of your normal purchases can be donated to the school. Use the below link and search for Friends of Pangbourne Primary School.

<https://www.easyfundraising.org.uk/panel/>:



**New book on the Thames Valley by local author and photographer - Jim Donahue**

- Tells the story of the region's history for the first time
- Celebrates the vibrant community life of towns and villages from Windsor to Oxford, including Pangbourne & Whitchurch
- Full of vivid images and engaging stories

Available at **Garlands Organic** and the **Rhubarb Tree** for £24.99 or request free home delivery at [jimdonahue7@gmail.com](mailto:jimdonahue7@gmail.com)

**Aylett Electrical**



Kevin Aylett – your local, reliable, registered and insured electrician

- Domestic installations
- Testing and repair
- Free quotes and advice
- All maintenance and repairs undertaken

Blossomsend Cottage Blossom Lane Theale RG7 5BE  
Tel: 0118 9302037 Mob: 07986 033 051

**Book Group at the Library**

New Members welcome in 2025

Contact Pangbourne Library on  
0118- 9844117

Email: [pangbournelibrary@westberks.gov.uk](mailto:pangbournelibrary@westberks.gov.uk)



### Our New Preschool Has Opened Its Doors!

**A**fter months of campaigning, fundraising, and planning—and weeks of construction—the new preschool building officially opened on Friday, 17th January, with a ribbon-cutting ceremony led by local Lib Dem councillor Maggie Filipova-Rivers.

On this joyful morning, Tim Suiter, Chair of the Preschool Committee, addressed the attendees to share the story behind the project. He reflected on years of dedicated fundraising by past committees and recounted the pivotal moment during Easter 2024, when they discovered that the central roof beam was rotten and would not survive another winter. This urgent revelation sparked a passionate campaign to save the preschool, resulting in the additional funds needed to complete the construction.

Tim also expressed heartfelt gratitude to the community, emphasising that this achievement would not have been possible without their unwavering support. From organising fundraisers and volunteering time to donating vital resources, the collective efforts of the community brought the dream of a new preschool to life.

This marks the beginning of an exciting new chapter, promising a positive and enriching environment where children can thrive and the community can continue to come together in support of its youngest members.

#### **The team responsible for making it happen!**

OffPOD, the company entrusted with this ambitious endeavour, brought their expertise and determination to the forefront. Despite this being their first project of its kind for a preschool, they embraced the challenge and delivered an exceptional build in just a few weeks.

Behind the scenes, a dedicated group of preschooler parents took charge to ensure everything ran smoothly. Tim Suiter, Becky Galea, Leigh Gorton, and Becky Bell, all active members of the Preschool Committee, went above and beyond by forming a specialised building committee. Their commitment and oversight were instrumental in keeping the project on track and aligned with the preschool's vision.

Chris Bell, a preschooler parent with extensive building experience, volunteered his professional expertise to supervise the project. His hands-on approach and role within the building committee

provided invaluable guidance, ensuring every detail met the highest standards.

Additionally, Lawrie Gatherum, parent of a former preschooler and a skilled architect, generously volunteered his time and expertise to advise on the building design. His insights played a crucial role in creating a functional, welcoming, and innovative space tailored to the needs of young learners.

A huge thank you for all your hard work and congratulations on such an amazing achievement!

This project was part-funded by the UK Government through the UK Shared Prosperity Fund with South Oxfordshire District Council serving as the lead authority.

#### **Seeking Local Artists**

To make our preschool environment as warm and inspiring as possible, we are seeking a talented local artist to volunteer their time and skills to paint a mural on one of our main walls.

The mural will play a key role in brightening up the space and sparking imagination in our little learners.

While this is a volunteer opportunity, we would be delighted to showcase your work on our website and social media, giving credit to you as the artist. If you are interested in contributing your talent to this project, please contact us at: [hello@whitchurchpreschool.org](mailto:hello@whitchurchpreschool.org)

Thank you for considering this opportunity to make a meaningful impact on our preschool community. We can't wait to hear from you!

#### **Limited Spaces Available**

We still have a few spaces available for new starters aged from two years upwards in our brand-new pre-school building.

We're open from Monday to Friday during term time from 8.45am - 3.15pm with an early drop-off option at 8.30am and late pick up to 3.30pm.

Government-funded places are available for two - three - and four-year-olds for 15 or 30 hours per week during term time.

We are Forest School, Healthy Smiles and Hygge accredited.

Children from outside the Whitchurch catchment area are welcome to apply.

To register your interest, please use the form on our website or email: [hello@whitchurchpreschool.org](mailto:hello@whitchurchpreschool.org)

**Registered Charity: 1183193**



# Hicks Baker: Expert Advisory Services For Commercial Property

*Your trusted partner in property solutions*



At Hicks Baker, we take pride in offering specialist advice across all key aspects of commercial property. With the recent appointments of **Adam Schofield**, leading our **Lease Advisory** services, and **Lloyd Rockall**, heading up our **Building Surveying** team, we're positioned to provide expert guidance to meet the needs of landlords, tenants, investors, and occupiers alike. Whether you're looking for advice on lease agreements or property improvements, our experienced team is here to help.



## Introducing Our Core Service Areas:



### Lease Advisory

Our specialist team navigates the complexities of rent reviews, lease renewals, and lease re-negotiations, to help both landlord and tenant clients achieve the best outcomes.



### Building Surveying

Offering services from dilapidations and refurbishments to heritage projects, our building surveyors can assist with all clients' construction and maintenance needs.



### Property Management

From strategic advice to lease management to service charge administration, our property managers and surveyors will help maximise your asset's performance.



### Retail & Leisure - Agency

Whether you're a landlord seeking a new tenant or a business looking for retail space, through our market knowledge and expertise, we will guide you every step of the way.



### Office & Industrial - Agency

Buying, selling, or acquiring new space, our team provides specialist advice on all aspects of commercial property transactions, helping you meet your business needs.

Get in touch today to learn how we can support your commercial property requirements.

P: **0118 959 6144**  
E: **info@hicksbaker.co.uk**  
W: **hicksbaker.co.uk**

### Jimmy Page, Led Zeppelin and Pangbourne

**D**id you know that here, five decades ago, music history was made?

Maybe newer residents of this parish don't know about this vital piece of the story of a band so huge that they spanned the planet as one of the biggest heavy rock bands throughout the seventies, smashing sales records of both LP's and venue capacities and setting standards in music, some of which are still unsurpassed.

Back then Pangbourne locals knew that a semi-famous 'longhair' had moved in, and the village music-heads must have flipped out as, in his few years here, the skinny hippie musician became a bona fide rock star and his band went from strength to strength writing and recording some of the greatest songs ever.

Jimmy Page moved to Pangbourne in 1967 just prior to forming Led Zep. Through much of the early/mid 60s he was a successful session musician, a guitarist for hire thriving on diversity and playing his six and twelve string guitars on polar opposite music styles. Some of his more famous session work was on Shirley Bassey's Goldfinger, The Kinks - I'm a Lover Not a Fighter, The Who's - I Can't Explain, Marianne Faithful's - As Tears Go By, The Stones - Heart Of Stone, the Donovan classic - Sunshine Superman, Petula Clark's hit single - Downtown and Tom Jones - Green Green Grass Of Home to name but a few.

He eventually put down band roots in 66 when he joined The Yardbirds creating a ridiculously good twin guitar sound with another guitar god the late Jeff Beck..... to be a fly on the wall in those rehearsals! By '68 and getting tired of the band's 'pop' direction, he left the Yardbirds, the band eventually collapsing as other members 'split the gig', and cast out on his own again.

He moved to Pangbourne during the final throes of the Yardbirds, living on the Thames (for the sake of the residents I'll not name the house). Once again he was band-less. Page though, had big plans. He craved experimentation and wanted a group of likeminded muso heads to push the hard blues rock of that era out and on to new pastures.

Page saw Robert Plant singing at a gig in Walsall in '68 and was impressed, very impressed. He invited Plant to Pangbourne. Plant got off the train at Pangbourne station and was immediately told by a local woman of age (can I say old woman? She might have been 50.... which was old back in 68!) to 'Get your hair cut'. He bravely pushed on after this confrontation (!) and met Page at his home. Plant stayed a week. They jammed, played blues and skiffle records and got drunk in The Swan.

When Plant left Pangbourne, heading back to the

Midlands (and still with longhair), Led Zeppelin was formed.... albeit with the working name of The New Yardbirds. But Led Zeppelin was born, was born here, in Pangbourne. This fact still blows my mind.

I've heard precious little about Page and Led Zeppelin's presence in our village other than a few stories from a neighbour who shall remain nameless... cheers though Tony.... D'oh! Sadly though, these stories of encounters and experiences with Page and Zeppelin that might still be remembered, are going to end up disappearing as residents move away or sadly, you know, that other final thing.

I want to try to get as many of these stories and tales together as I can, to preserve the memories of locals during that period of social and musical upheaval.

From their ground breaking debut 'Led Zeppelin' ushering in the era of 'heavy rock' music, through Zeppelin albums 2 and 3, culminating with the mighty, 37 million copy selling untitled fourth album (it's called Zep 4 fer gawds sakes, everyone knows that!) Page lived, and the band wrote, here, mostly putting together songs in Pangbourne that would become the standard for heavy music, influencing millions of musicians and thousands of bands right up to today (listen to yank rockers Greta Van Fleet riding high in the American charts and you're listening to a pretty darn good homage to Zeppelin)

The famous cover of Zep 4, an old man carrying a bundle of sticks, was purchased by Page or Plant when they were mooching through the second hand shops on the Oxford Road.

John Paul Jones, the band's bass and keyboard player, came up with the intro to Good Times Bad Times - the opening salvo of the first album 'Led Zeppelin' - whilst walking up the hill to Pangbourne station after a writing session.

The 1975 double album Physical Graffiti had lots of small pics in the windows of the New York tenement building which was pictured on the record cover and inside sleeve. One of those thumbnails (if you like) is of the band dressed as mobsters hanging out of an old 1920s American gangster style 'Anthill Mob' car dressed in zoot suits homburg hats and toting zip guns. This photo was taken on Whitchurch toll bridge.

Richard Cole, the band's road manager and much more, could often be seen tooling through the village on a cherry red Triumph T100 Daytona from his home in neighbouring Purley to The Swan pub or to Page's place. The bike was a gift from the band to him when he missed a tour of the U.S due to illness.

These local stories are incredible to this music fan of fifty years and a Led Zeppelin fan for most of those.

But I've gone on enough.

I would like to collect as much local info about this period in our village, put it together and maybe, if there's enough material, create a compilation that I can

make into some kind of booklet for all of our benefit. So, should you have a story, a memory, anything which will fatten out the tale of his time here I would very much appreciate it.

Email me on paulbelcherpropertyservices@yahoo.co.uk (for all your property needs!)

**Or call me 07888680834.**

If you made it this far, nice one.

**Paul Belcher.**

---

### Pangbourne Lodge Drive

**P**erhaps surprisingly, Pangbourne Lodge Drive is not the name that was originally intended for this roadway. The Pangbourne Parish Council Minutes for 1 December 1964 state "That the alternative names of 'Fairmead' and 'Garden Close' be suggested to the Bradfield Rural District Council (predecessor of West Berkshire Council) as the names for the above development". The proposed occupants of the three houses being built there objected, and the rest is history.



*Pangbourne Lodge.*

Standing at the end of Pangbourne Lodge Drive and largely hidden from view is an elegant house. Pangbourne

Lodge is early Georgian architecture at its most charming.

Traditionally, such a house would have an imposing, tree-lined drive leading up to it, but in the 20th century and since, the drive has often become just a short driveway. One would be hard-pressed to claim that one actually drove down it, and in any case 'drove' nowadays only refers to what one has done.

However, until the advent of the railway network from the 1850s, 'droving' was an activity in its own right, and the only way of moving animals to market. A 'drove' was a substantial herd or flock, the large numbers echoed in "people arrived in droves". Former drove roads are often wide, with broad verges on either side.

The men involved in this trade were drovers, who accompanied their livestock either on foot or on horseback, often from North Wales to London and Smithfield Market. As Bruce Smith points out on his excellent website "Local Drove Roads",

many drovers started to learn that tough trade as boys. Routes had to be learnt by heart, without signposts or maps, and water found without fail or the herd would be lost, because each bullock or heifer needed 8-10 gallons a day. The boys had to learn how to survive in the open, use dogs for herd management, speak English since their mother tongue was Welsh, and even resist the temptations of the Big City... Drovers wore the sign of their trade, the bowler hat, with pride.

---

### THE HIKER'S MYSTERY EXPRESS

**O**n the morning of March 25th 1932, Good Friday, crowds of excited passengers gathered on platform 3 at Paddington station. They had each paid four shillings for a return ticket to an unknown destination on the Hiker's Mystery Express. Not even the engine driver knew where he was going until a few minutes before the guard blew his whistle at 10.25. As Great Western Railway locomotive 4002 Evening Star steamed out of the station, itineraries for the trip were handed out and the name that rang around the packed carriages was.... Pangbourne!

Along with each itinerary was a copy of the GWR booklet *Rambles in the Chiltern Country* from which hikers could choose from three of the 25 rambles described. The train's first stop was Tilehurst but most opted for Ramble no. 25 from Pangbourne. A photo of the day's itinerary is in the Science Museum collection at <https://collection.sciencemuseum.org.uk/objects/co8002053>.

The Hiker's Mystery Express, the first of its kind, was the brainchild of the GWR's marketing department - an idea soon copied by other railway companies. It came at a time when hiking/rambling had become very popular, appealing particularly to those under 30. In fact, demand for the trip was so great that a second train had to be hastily arranged for the several hundred that had been left behind. The following day, the *Daily Mirror* estimated that nearly 2000 people had booked this 'adventure into the unknown'. As well as coverage by the national press, a Pathe News crew filmed it. Their film, *Hiking up-to-date* (<https://www.britishpathe.com/asset/99784/>) shows excited crowds at Paddington and walkers wending their way along the Thames - a jolly procession of blazers, rucksacks, 'plus fours' and walking sticks!

Their ramble, 'rich in scenic beauty', followed the riverside path to Lower Basildon then climbed the hills above Streatley before returning to Pangbourne via Goring, Hartslock Woods and Whitchurch. At the time there was also the option of a ferry at Gatehampton, to return via Lower Basildon. Much more information about the excursion enjoyed by so many happy hikers, as well as a modern day walk retracing their steps, is given in the February 2022 issue of Country Walking magazine – the inspiration for this article.

*John Prior*

---

## PANGBOURNE HERITAGE GROUP REPORT



**I**t is with regret that we announce the death of Lyn Davies in December last year. Lyn joined the group shortly after the 2005 exhibition 'Pangbourne at War', which was the first opportunity for the newly formed group to

share with the village the possibilities of local research. Lyn had already been responsible for producing the Village Design Statement with the local council, and the mountain of work resulted in a production which is still relevant today. Lyn had several projects of his own to pursue at the time, and found the Heritage Group gave him the chance to share his findings.

Lyn was born in Swansea in 1931, one of three children, living in a house that was once occupied by Dylan Thomas's family. From grammar school he went to LSE in London to study Town Planning. His reputation grew, and he worked as a consultant in Africa, Canada and the Middle East. He became a Professor at Reading University in 1977, and in the 1980s moved to Pangbourne to Hartslock Court, where he lived until the last few weeks of his life. He had many interests, including Music: Opera, Jazz and Boogie, which he played on the piano. He had over 2000 books, some were first editions. He had a wide circle of friends and was often seen on the train going to London to have lunch with some of them.

During his years as a member of the Heritage Group he gave several talks based on his findings when delving into the development of the village since 1840, when the census collections were

introduced. One major project concerned the breakup of the manorial estate of Bere Court in 1894, which led to the rapid expansion of what became the blueprint of the present village. From this emerged the "Century of Change 1830-1930" exhibition in 2010. It was a fascinating period to work on and was based around Lyn's original discoveries.

Other projects included the publishing of an historical Walking Guide leaflet for which he wrote the text in 2015, and what we refer to as the Shops Book, which was put together by the group for the village community. Although entitled 'Shops, Trades and Businesses in Living Memory from the late 1940s', we went back to Lyn's original research and maps from the 1840s and also his later studies to give an accurate picture of how and why change occurred. After a brief time as Chairman, Lyn stood down, although he remained an active member for as long as his health allowed. He had a dry sense of humour and a breadth of knowledge he shared with us on frequent occasions, keeping us on our toes. We shall miss him very much.

*The Heritage group members.*

---



**GARLANDS**  
organic & natural



**Garlands for high quality food and much more**  
Seeds, nuts and grains | Organic fruit and veg  
Artisan bread | Dairy & Non-dairy chilled foods  
Speciality and "Free from" foods | Organic wines  
COOK remarkable food for your freezer | Local beer  
High-quality health supplements  
Boody Bamboo Clothing | Benecos Natural Cosmetics  
Eco-friendly household products | Candles |  
Essential Oils | Loyalty scheme

6 Reading Road, Pangbourne, RG8 7LY  
0118 9844770 orders@garlandsorganic.co.uk  
garlandsorganic.co.uk



**“Lafford & Leavey, experts in bringing the outside - inside”**

## Windows - Doors - Conservatories UPVC or Timber

One of the leading window, door and conservatory installers in Berkshire, offering free quotations and advice from a company with a formidable reputation spanning 50 years. Choose from a wide range of products in a style and finish which will suit your budget and needs, we are only a phone call away.



## **LAFFORD & LEAVEY LTD**

ARROWHEAD ROAD, THEALE, READING, RG7 4AZ

Tel: Reading (0118) 9303333 Fax: (0118) 9323707

Email: [info@laffordandleavey.co.uk](mailto:info@laffordandleavey.co.uk)



**News from Action for Pangbourne Toilets**

**T**he Trustees of Action for Pangbourne Toilets (APT) are delighted to announce that the final stage of the modernisation of the Station Road Toilets will begin in March. The Night Toilet will receive a full overhaul, bringing it up to the standard of the Ladies, Gents and the Disabled Unit. This is possible thanks to our supporters who have been so generous with their donations and help from the Greenham Trust and the National Lottery Community Fund.

Modernising and maintaining the toilets has been the aim of the Trustees since we took over the block in 2017 and we hope to organise an event



to celebrate the achievement in September, exactly 8 years from the re-opening- more about this event as the time draws nearer.

Many people in Pangbourne share our view that the Station Road Toilets are a great asset to our village. They are very useful for locals and play a role in attracting visitors to our village, so helping local businesses as well as the elderly, young families and key workers passing through. The Toilets are now used about 28,000 times a year, as monitored by counters on the outside doors of the facility. This is evidence indeed that there is a massive need for them in our community. The Trustees of APT are in discussion with the Pangbourne Parish Council concerning the future running of the fully modernised Toilets.

Further information available at: [www.mistletoe-clinic.co.uk](http://www.mistletoe-clinic.co.uk)

*Kinesiology is a wonderful, gentle therapy for adults and children. It looks at structural, nutritional, emotional and electrical imbalances, and aims to restore ease in the body. Discover our friendly setting in Pangbourne.*

A . B .  
**WALKER**

Local, independent, family-run funeral director supporting Pangbourne

"Incredibly experienced and professional, but the thing that really shines through is how kind and supportive they are."

Excellent ★★★★★ Trustpilot

Local branches in Tilehurst and Caversham  
**0118 304 0068**  
[www.abwalker.co.uk](http://www.abwalker.co.uk)

Inspected and rated  
**Outstanding** ☆

CareQuality Commission

**Coombe House**

RESIDENTIAL CARE  
Exceptional care, every day

Our home in Streatley-on-Thames provides 24-hour care and support in an elegant, homely country house. Residents enjoy a relaxed atmosphere that ensures privacy, independence, and a nurturing environment.

Call us today at **01491 872174** or email [enquiries@coombehouse.co.uk](mailto:enquiries@coombehouse.co.uk) to book a visit today!

[www.coombehouse.co.uk](http://www.coombehouse.co.uk)



## Pangbourne Rotary's Santa raises over £8000 for good causes

Despite the cost-of-living crisis this princely sum was donated by the public in 12 street tours and 4 static locations from 2-23rd December. The grand finale at Tilehurst Triangle with carol singing from the Churches of Tilehurst, mince pies and mulled wine attracted over 500 people.



A Rotary spokesman said "Over £8000 and even more happy faces is a fantastic result. We would like to thank the public for their amazing generosity and all the volunteers who make this happen. Like many voluntary organisations we struggle to have enough helpers to maintain our fund-raising events, which enable us to donate over £35,000 to deserving causes, so if you are interested in helping us, having fun and doing good why not consider joining Pangbourne Rotary?"

Contact [membership@pangbourn Rotary.org.uk](mailto:membership@pangbourn Rotary.org.uk) for details or visit our Facebook page

<https://www.facebook.com/rotaryclubofpangbourne/>

or website

<https://www.rotary-ribi.org/clubs/homepage.php?ClubID=1669>

Remember our next fundraiser is the Woodcote 10K on 12th January

[www.woodcote10k.co.uk](http://www.woodcote10k.co.uk)

Santa with the One Voice Choir at Sainsburys Calcot(14/12)

Pangbourne Rotary's annual Woodcote 10k run

on Sunday 12th January was a great success- with about 450 registered runners, nearly 400 of which started the race despite the near freezing conditions.

An estimated £5000 will be donated to Charitable causes-Parkinson's UK, Motor Neurone Disease Association and Pangbourne Rotary's Charity.

A spokesman said "We are grateful for the runners (the largest number of entrants since COVID, and over 40% up on last year) who truly enjoy participating in this tough event and to all the volunteers who make this happen-

Rotarians from several local clubs, friends and partners from our members as well as volunteers from our charities.

We are also indebted to our sponsors Warmingham's Estate Agents and Peppard Building Supplies

***We thank you all!"***

Depicted are the overall winner (Chris Lucas), the female winner (Dani Bailey) seen here with Bob Warmingham and our President James Richardson at the trophy presentation.

***We look forward to 2026.***

**SPONSORSHIP OPPORTUNITIES**  
**Rotary Club of Pangbourne**

ART EXHIBITION  
28 - 30 MARCH 2025  
PANGBOURNE VILLAGE HALL



**SPONSORS NEEDED FOR;**

Catalogue distributed to 1,000 expected visitors - £500	Display boards - £10 each	RAISING FUNDS FOR Bridge for Young People and Brookfields School;
Gifts to Schools showing	Raffle Prizes	

**Your BUSINESS NAME  
IN ALL PUBLICITY**

**Rotary**  
Charity 1179121



### PANGBOURNE BOWLS CLUB

With our Bowling season ending in September 2024 the majority of our members are

now taking a well-earned rest, following what was a disrupted season with the weather which in turn caused flooding to the green and consequently a reschedule of our first home matches. It also made the green very heavy to bowl on until a tremendous amount of work was put back into the green to improve its condition, and whilst the season has now closed that work has now increased as we put the green to bed and give it a chance to recover.

Already our Green Team has made a massive start on treating the green and it has already been Aerated hollow tined, solid tined, treated with fertiliser, spiked, weeded, and had 30 kg of grass seed applied and then cut back to 9 mm and part of this will continue through to the end of March early April 2025 when the Green will be woken up with much of the same again, but as our green is on a flood plain the weather will play a significant part in how successful we have been and its quite noticeable that most clubs large or small are judged by the condition of their green and not the facilities they have. Some are classed as fast others as medium or like ours heavy. But it's not only the green that requires attention.

We are, due to its age, having to replace certain parts of the concrete surround replace the paving stones and remove the wooden battens, repaint the safety lines all before we commence playing again in April 2025. All this work being supervised and done by our ageing Green Team. Having a good playable green is a big bonus but unless you have the members to actually play on it then this work is all in vain. This is where we really DO NEED YOU. PANGBOURNE AND DISTRICT BOWLS CLUB is entering into its 104th year, it has been located on the Recreation Green as far back as we can trace, but many residence do not know we are there, or even exist, although we share the Club House with the very successful Tennis Club, and the Bowling Green is located right next door. This club by its name, is for the benefit of the whole village, it's your local club and whilst we are by no means the biggest club in the area, I would challenge you to find a more friendlier club in the leagues but we really need you to help build on the success of the club for the future. We are fully aware that prospective new members will not join because of the walk across to the Club House from the car park is

across the playing field, that is often very muddy and unlit, which is a problem for evening games and very difficult to pull your bowls bags across.

HOWEVER thanks to Pangbourne Parish Council with support from the Bowling and Tennis Club, work for a new 2 metre footpath is due to start in March which should improve access to the Club House, Bowling Green and Tennis Courts, which will bring us in line for access with other clubs.

As your local club we welcome all ages and we will be once again introducing our Junior Bowling Programme one night a week, for ages up to 18 years old. If you are new to bowling you will have coaching by qualified coaches on average once a week, this will also allow you to have a roll up with other members on other nights of the week, and you will be encouraged to play as little or as often as you like.

We play in the OTL league, which is a mixed league, the KLV league which is for men only (over 55) as well as Ladies only friendlies, plus additional friendlies with other clubs. Also, our Inter Club matches, and of course our social evenings. It's a full programme of Bowling for you to enjoy and to participate in. Maybe like a lot of people you may think that bowling is a sport for the older generation. This is totally untrue and is probably brought about because we do play games during mid-week afternoons, when most people work but we also play evenings, Saturdays, and Sundays. It was good to note that last year's world ladies champion was only 30 plus years old, and the World under 18 Championship indoors has just taken place. So why not support your local club, come and make new friends not only in Pangbourne but everywhere we visit whilst enjoying the healthy open air sport of bowling. Come and give it a try by attending our first OPEN DAY on SATURDAY 12th APRIL @2PM All we ask is that you wear flat shoes to avoid damage to the green all equipment will be supplied on the day. Tea and Coffee will be available and the bar will be open. If you are unable to attend on this date why not come along on our second OPEN DAY, SATURDAY 17th MAY @ 2 PM when we will be sharing the day with the Tennis Club, but of course you are welcome to come at any time our members are down there, they will be delighted to welcome you and answer any questions you may have, or feel free to contact me at [colin.holloway@gmail.com](mailto:colin.holloway@gmail.com) telephone no 07884136987.

We already have one county player could you your son (s) and daughter (s) be the next county player you will not know until you try.

**Colin, Club Captain.**



- ✓ Relieving Hunger
- ✓ Restoring Dignity
- ✓ Reviving Hope



**Helping those who are struggling  
to make ends meet**

**Providing 7 days of groceries to  
individuals and families who are  
experiencing hardship**

**Call 0808 208 2138**

**We always need donations of  
non-perishable foods**

**Cans of meat, fish, vegetables,  
fruit, and packets of dried goods  
such as rice, cereal, biscuits, etc.**

**(Donations of toiletries and  
money are always appreciated)**



### On Court this Winter at Pangbourne Tennis Club

**T**he new season at Pangbourne Tennis Club is here! It's time to get back on court! Tennis has been running throughout the winter under the court lighting, despite some very wet conditions. But the club is getting ready to maximise the warmer weather and lighter evenings of spring and summer.

We are keen to make sure that anyone who would like to play tennis, at any level, can take part in club activities. We are a friendly club, and you will get a warm welcome, whether you fancy giving tennis a go for the first or are an experienced league player. Our activities cover the whole range, and we want to encourage as many people as possible – of all ages, shapes, sizes and fitness levels – to enjoy the wonderful facilities we have at the club.

The club is located between the river and the railway on the Recreation Ground, and we share the club house with Pangbourne Bowls Club.

Benefits of membership include free access to the club courts, discounted rates for drills and training sessions, fun tournaments, a range of team matches and free membership of the Lawn Tennis Association, which gives you access to the ballot for Wimbledon tickets.

The annual subscription for adults is £65. Junior membership is £25. We also offer a family membership for £135, which covers up to two adults and all the children in the family. Join online at [www.pangbournetennis.org](http://www.pangbournetennis.org), scan the QR code or email [info@pangbournetennis.org](mailto:info@pangbournetennis.org) for more information.

#### Pickleball comes to Pangbourne

The pickleball taster sessions we ran in 2024 were very popular. To start 2025, the club is delighted to offer coach-led sessions on Sunday mornings at 10:00 – 11:00, running from 2nd March to 27th April. All the equipment is provided, which is ideal if you would like to try pickleball. Players with experience are also very welcome at the sessions. Go to [www.pangbournetennis.org](http://www.pangbournetennis.org) for instant booking online – advanced booking is essential and don't delay as places are limited to 12 participants each session.

#### What is Pickleball?

Fast becoming one of the most popular racquet

sports in the world, pickleball brings together some of the best elements of tennis, badminton and table tennis, into a fun and exciting game for people of all ages and abilities. Played on a court the same size as a badminton court – and using a shorter tennis-style net – players use paddles to hit a plastic ball between one another. You can play as both singles and doubles, and it's a great way to exercise with friends and family.

#### New to tennis? There's a course for you!

The Start to Play programme for adult and older teenage beginners is starting again on 4th May and is open for booking. Running on Sunday mornings at 10:00 – 11:00, this programme is designed for players who are completely new to tennis and want to learn the basics. Run by our club coach Damian Lane who is very experienced in developing players of all standards, this programme will get you started in a supportive environment. It's also suitable for older teenagers who haven't played tennis before. The sessions are limited to six participants, so book early! Go to [www.pangbournetennis.org](http://www.pangbournetennis.org) or scan the QR code and select the coaching tab.

#### Interested in Walking Tennis?

Have you heard of Walking Tennis? Along with Walking Football and Walking Netball, there's now Walking Tennis! In this version of the game, doubles are played on a singles court, the ball is allowed to bounce twice, and no running is allowed!

It's a great way to continue to play tennis as one gets older. It's also very useful to get back on court after sustaining an injury or if you are a beginner. We are running social Walking Tennis sessions on Saturdays at 13:00 – 14:00 starting on 1st March. It's free, open to both members and non-members and there's no need to book and we can lend you a racquet if needed. Email us at [info@pangbournetennis.org](mailto:info@pangbournetennis.org) for more information.

#### Coaching, drills and social tennis

The popular Tuesday evening and Sunday morning coaching and drill sessions run throughout the year. The winter programme continues until the end of March, with the spring programme starting in mid-April. Check out the website by scanning the QR code for details of the sessions.

Social doubles sessions run on Friday evenings at 19:30 – 21:00 and on Saturday afternoons at 14:00 – 15:30. Everyone who can serve and sustain a rally is welcome. And, if you are thinking of joining the club, come down to one of these sessions to meet

other members and try out the courts.

To open the season, there's a fun American Doubles Tournament on Sunday 30th March at 13:30. It is a great format which works for all abilities. Anyone who can serve and sustain a rally is welcome to enter. You don't need a partner - you will be playing with and against lots of other players. There will be prizes for the players who amass the highest number of games!

### Junior coaching is back on Fridays.

Get ready for junior coaching on Friday afternoons which is starting with taster sessions in March before the 12-week programme gets underway after Easter.

Go to the website for details of the fees for junior membership and coaching and to book the places for your children as soon as possible so that you don't miss out – the junior coaching sessions fill up quickly! Parents who would like to play tennis whilst their children take part in the coaching are invited to use the adjacent courts where club members will be on hand to knock around and provide some guidance. All abilities welcome!

### And finally, an off-court social – Quiz Night

Join us for Quiz Night on Friday 21st March at Pangbourne Village Hall. It's a fun event open to everyone in the community where we raise funds to support disability tennis at the club. Assemble

a team and book a place on the Events tab of the website now!

Looking forward to seeing you on the courts

**Pangbourne Tennis Club Committee**



## NEIL HOULDEY

### Quality Painting and Decorating

- All types of interior and exterior work completed
- Advanced City & Guilds qualified
- General maintenance and repairs undertaken
- Gold CSCS card accreditation
  - 30 years experience
  - Fully insured
- Pangbourne and surrounding areas

**07731 476100 • 0118 9845532**

**neil.houldey@yahoo.com**

[www.neilhoulderqualitypaintinganddecorating.com](http://www.neilhoulderqualitypaintinganddecorating.com)

## PANGBOURNE ART GROUP

**O**ur Art Group recommenced at the beginning of January after the Christmas break. I think everyone was happy to return and get into a routine again.

The end of 2024 had been very busy with our Annual Exhibition in October. Also in December a Christmas Lunch was organised by Margarita, which took place at the Butt Inn in Aldermaston. It was a very enjoyable, social event which all our members appreciated. At our Annual 'End of Term' party, we had some festive food accompanied by mulled wine. Following on we had some Carol singing and a quiz.

During the afternoon we had our usual Christmas card competition, with a very nice selection of cards. The card voted most popular was by one of our newest members Rosemary, depicting a rabbit hanging up his stocking.

Also the prize for the most voted for painting by the public at our October Exhibition was won by John Howie with his painting of Beruit. Well done to both of them.

This term we have our Annual AGM coming up on 5th February, with the Chairman and the committee being

voted in and their roles decided upon for the coming year. The Committee work very hard making sure that members have an enjoyable experience when they attend, with interesting and variable events during the year. This also includes keeping our website up to date, by Donald with activities that we have done during the year. Also that our Gallery page has a variety of interesting and beautiful art work by our members. As mentioned in my last report, we have a Watercolour/Acrylic Workshop coming up with a local Artist, Howard Birchmore. This will be in March, so something to look forward to.

We hope to get some Plein Air painting done this year, as we didn't make it last year. It all depends on the weather!

If you are interested in joining our very friendly and social group which takes place every Wednesday afternoon from 1pm-4pm please get in touch with either Alison Bourne, Secretary on 07776 252605 or Elizabeth Ford on 07986668503, or alternatively our website on [pangbourneartgroup.com](http://pangbourneartgroup.com)

Happy painting!

**Elizabeth Ford, January 2025.**



### PANGBOURNE CHORAL SOCIETY presents EASTER THROUGH THE AGES

**F**alkland Islands Memorial Chapel, Pangbourne College, Saturday 29th March (7.00pm)

Following PCS's recent 'retrospective' of Christmas music, which was widely acclaimed, we are proud to offer a similar programme of Easter music that demonstrates the progression of Easter anthems over the past few centuries.

The earliest works include major Easter anthems from Part II of Handel's Messiah, alongside a work by Handel's contemporary, Antonio Lotti, his Crucifixus. We will also hear more recent works by John Henry Maunder (the under-performed Olivet to Calvary - 1904), James MacMillan Christus Vincit - 1994), and the more contemporary work by Sarah Macdonald - the hauntingly beautiful and moving Crux Fidelis.

The soloist will be Sara's highly accomplished sister Tori Benbow (Soprano) and accompanists on organ and piano, as we seek to focus on the beauty of the choral parts with minimal orchestral embellishment.

PCS Music Director, Sara Benbow, has already demonstrated her innovative flair throughout her first years with PCS. She says: 'Like Christmas, Easter sacred music has many familiar works such as the Messiah Part II, but there is a host of wonderful anthems that deserve to be heard more often, and this concert seeks to show the progression in the composition of Easter choral music from the classical to the contemporary - something for everyone to enjoy at this special time in the religious calendar'. Comments PCS Chairman Brian Hoskins: 'As in all our concerts with Sara, we can expect an introduction for each work before performance, which we find brings audience and singers much closer together. And of course, we would love to welcome more singers to our 100-strong group through concerts such as this'

Tickets (£17 - and £5 concession for under-18s) are available from Garlands Organic & Natural, Pangbourne, from PCS website, and PCS members, and on the door.

**Tony Maynard - Publicity Officer - Pangbourne Choral Society: 0118 984 5079**

<https://pangbournechoral.org.uk>



### News from Adventure Dolphin Pangbourne

**W**e wish to extend a very warm welcome to the Mobility Trust, who have chosen to rent our

office space with beautiful views of the Thames and meadows. The Charity provides powered wheelchairs and scooters for UK residents who have severe disabilities and who cannot obtain such equipment through other means. If you would like to support their work, please visit [mobilitytrust.co.uk](http://mobilitytrust.co.uk).

The Duke of Edinburgh team at Adventure Dolphin would like to thank the Rotary Club Reading for their generous donation of £1000. The funds will enable us to buy new tents to replace those given about 20 years ago. The Bronze, Silver, and Gold participants will use the tents for their expeditions.

We are running two climbing taster sessions for children on Tuesday, February 18th, and Wednesday, February 19th. Please contact [bookings@adventuredolphin.co.uk](mailto:bookings@adventuredolphin.co.uk) for more information.

Easter school holidays are almost upon us. If you are looking for activities for your children, look no further than Wild Adventure at Adventure Dolphin, [www.wildadventures.uk](http://www.wildadventures.uk), who offer survival days, paddle sport days, and much more.

Finally, we would like to recruit another couple of trustees to strengthen our management team. If you have skills and enthusiasm that can help improve the Charity's provision for the community, please email [info@adventuredolphin.co.uk](mailto:info@adventuredolphin.co.uk).

We would also like to recruit a volunteer 'handyperson' to help us look after (and improve) the Dolphin Centre and its facilities (including its surroundings). If you are good at fixing things, please email [info@adventuredolphin.co.uk](mailto:info@adventuredolphin.co.uk).



We stock over 100 delicious local, British & Continental cheeses as well as a wide range of delicatessen products.

We're proud to support small artisan producers. We pride ourselves on our customer service and are dedicated to providing cheese at its very best.

Come and visit us at 17 Reading Road, Pangbourne  
Find us on Facebook, Instagram & Twitter

[cheese-etc.co.uk](http://cheese-etc.co.uk) @PangCheeseShop 0118 984 3323



**Pangbourne Dementia Forum**

**THE THURSDAY HUB**

**D**ecember has been filled with wonderful memories!

Our day at Henry Street Garden Centre was a special way to celebrate the festive season with friends.

Englefield Carebus's, yes 2 buses as there were 30 of us, picked us up at The George which set the ambiance for the day, travelling together was fun and very convenient, it adds



a lovely touch to the outing. We arrived with time to browse the festive items before sitting down to a beautiful Christmas lunch with all the trimmings. The service and staff were exceptional ensuring everything ran smoothly. Finally, after enjoying the lunch, we had time to shop for last-minute Christmas presents which was a perfect way to round off the day.



We had yet another wonderful festive experience at Langtree School! We were invited once again, such a thoughtful invite as the older generation love to see the

youngsters performing, it's so heartwarming to be entertained by the talented students. Being waited on and served tea, coffee, and the delicious treats like sausage rolls, cheese straws, and mince pies made by the pupils added such a personal touch to the visit. I must say the sausage rolls and mince

pies were beautiful so hats off to the students who baked them.

The day after Langtree we held our last Thursday party of the year was held on December 12th. This time we celebrated with sausage rolls (Green's best!), with mince pies and mulled wine, supplied by Devarshi "The George". This was greatly enjoyed by over 30 guests who were waited upon by our wonderful elf volunteers.

Janet and her superb ukulele group entertained us with a marvellous variety of songs which we all joined in. Our guests departed happily with Christmas 'hamper bags' which were filled with a lovely selection of goodies. Donations were received from Michelle Clarke, supporter of the Thursday Hub, Lynne of Foresters, Kiren our long time supporter and Val, who made 40 jars of Marmalade. A big thankyou to all the volunteers who have all worked so hard to make these occasions so jolly - a lovely year filled with happiness and laughter. Following on from the end of year we began on the same note in January 25...

Happy New Year to everyone! Belatedly by the time you read this!

We started 2025 with an excellent New Year Feast on January 16 and with a full house, 40 buddies, it was quite lively and fun at The George Hotel. Devarshi, the manager, laid on a delicious chicken lunch with all the trimmings accompanied by an ENORMOUS Yorkshire pudding which stole the show. Special thanks goes to Daniel, the head chef, for a superb meal.

A pencil and paper quiz kept everyone entertained while they pulled their crackers, chatted and waited for lunch. Di had arranged a most entertaining musical bingo game while tea and coffee were served with meringues, cakes and biscuits.

We welcomed some new faces and hope they will continue to attend. Very many hearty thanks to our wonderful volunteers without whose help these lunch/tea parties could not take place AND to Devarshi and her staff.

Announcement of Nomination for The King's Award for Voluntary Service

We are proud to announce that earlier this year, The Thursday Hub was nominated for The King's Award for Voluntary Service. We were one of fourteen organisations from Berkshire who were put forward for the award.

Representing our team, Gill, Les, and myself attended a ceremony in Wokingham, which was attended by all the nominees as well as the Deputy Lieutenants



**PEST WIZARDS**  
YOUR LOCAL PEST CONTROL SERVICE

**WASPS & ALL INSECTS  
RATS, MICE, MOLES & SQUIRRELS  
PROMPT SERVICE**

**MARK DEARLOVE** • 07446 377816  
(01491) 833282 • [info@pestwizards.co.uk](mailto:info@pestwizards.co.uk)

## Local Organisations

and the Lord Lieutenant, who addressed the meeting. We had to endure a few tentative months before knowing the result. Unfortunately, we were informed last month that we had not been successful. However, this does not take away the enormous accolade of even being nominated.

The Thursday Hub is a team of which we are very proud, and we extend our heartfelt thanks to all our members: Gill, Les, Vivien, Judy, Eve, Vicky, Val, Sarah, Linda, Stella, Wendy, Carolyn, Judith, Jane, and last but not least, Sue. Sue, the founder of the "Pangbourne Dementia Forum," now known as The Thursday Hub, has been our guide and support, shaping us into what we are today. Her dedication and vision have been instrumental in our journey, and we owe much of our success to her leadership.

We look forward to continuing our mission and serving our community with the same passion and commitment that has brought us this far.

### The One Voice Community Choir

It feels like a while back now, but both performances went so well! Our first was at Sava Centre, Calcot on the 14th Dec, when we were invited by Pangbourne Rotary to accompany Santa who made it in time for his Christmas tour of the area. Our second performance, a few days later on the 17th Dec, was outside The George, and with better weather than last year made it all the more enjoyable. Since then we have started up again and you will find us in the function room at the back of the George Hotel, every Tuesday. We gather at 10:15 for a cuppa and biscuits, followed by singing our new repertoire from 11:00 till 12:00. As we always say, "It doesn't matter if you think you can't sing—every note has its place. We would love for you to join us... May see you there.

### Cribbage Club



If you fancy a game or would like to learn we have a cribbage club held every 1st Wednesday of every month, no booking necessary just turn up

ready to play at 2 o'clock, you will find us in the bar at The George, no cost, just buy a drink at the bar.

For further information regarding our events please contact either *Di* on 0118 984 2473 or *Gill* on 0118 984 1122

*Many thanks, as always, to Devarshi, The George Hotel, Kiren Sharma, Greens of Pangbourne and The Pangbourne Cheese Shop for their help and ongoing support.*

### AWARD WINNING PUPPY & DOG TRAINING



- Puppy classes
- Graduate classes
- Genius classes
- Workshops
- 1 to 1 visits in your own home.

Check out our 80 five star Google reviews!

E mail: [sandra@happipup.co.uk](mailto:sandra@happipup.co.uk)  
Telephone: 07973272911  
[www.happipup.co.uk](http://www.happipup.co.uk)



Friendly & Reliable  
British Gas Trained Engineer  
Free Quotations – Fully Insured

Boiler Changes – Boiler Services  
Central Heating Systems & Upgrades  
Powerflushing & Descaling  
Landlord Certificates  
Installation of Gas Appliances  
Cylinder Changes  
Any Leaks – Taps Fitted  
Dripping Overflows

Call Danny on  
07830 073397  
0118 9452906

[dsgasservices@aol.co.uk](mailto:dsgasservices@aol.co.uk)



1093 Oxford Road, Tilehurst RG31 6YE

### THE BOUTIQUE ROOM

#### OFF THE RAILS

Unusual Ladie's clothes by Jenny Gill  
and

#### HANDCRAFTED JEWELLERY

by Sandy Ebdon-Jackson  
Includes Jewellery Surgery - Restraining,  
Replacing lost clasps and stones etc.

Pangbourne Village Hall RG8 7AN

1st Saturday of every month 10am - 3pm

Contact 0777 893 1021 / 077 892 38557



# redtooth

## poker

**Do you play or would like to learn to play Poker?**

*If the answer is – YES to either of these questions,  
why not join the Texas Hold 'Em Poker Night?*

**Venue: Pangbourne Club**

*Time: Tuesdays – 7.00 for 7.30 p.m.*

**1st, 2nd & 3rd places take the pot!**

*For further info, please contact James Blandy on email:*



**[james.blandy@icloud.com](mailto:james.blandy@icloud.com)**

**or mob: 07766 333221**



**The Poker game is £5 per buy-in per session with the proceeds  
going the game's winner, 2nd and 3rd places.**

Whilst it's not obligatory to be a member of the club to join Poker Night, why not become a member  
and enjoy all the benefits available with membership?

At just £20 per annum plus an initial £5 application fee, it really is worth joining!

For more information, please contact James Blandy at  
**[james.blandy@icloud.com](mailto:james.blandy@icloud.com)**

# Social Calendar

<b>Monday</b>			
09.30am-12pm	Tai Chi and Qigong	Karen: 07867 954 786 info@karenpounds.co.uk, www.karenpounds.co.uk	Dolphin Centre
10am-12pm	Hand bell tune ringing	Len Palfrey, palfrey62@btinternet.com	Whitchurch Art café
10.30 am	Adapted Pilates (Chair Based)	Vicky Elson Smith 07775638611, info@themovementclinic.co.uk	The Movement Clinic, Pangbourne
12.45pm-2.45pm	Art Courses	Jeanette 07500862025, art-courses@hotmail.com	Pang VH
2pm-4pm	Coffee & Craft	0118 9844117 - pangbournelibrary@westberks.gov.uk	Pangbourne Library
6.30pm	Zumba	Rachel Grocott 07885 444 510, rachelzumba4043@gmail.com	Pangbourne Primary School (VH in school hols)
7pm	Crib	info@pangbourneclub.co.uk (When the League is on)	Pang Working Men's Club
7.15pm-9pm	Duke of Edinburgh Awards	dofecoordinator@adventuredolphin.co.uk , www.adventuredolphin.co.uk , 0118 321 7206	Dolphin Centre
7.30pm	7-a-side Football	Laurie 07793680999	Pangbourne College
7.30pm-9pm	Badminton	www.pangbournebadminton.club (Term time only) A friendly non-league club. See website for session dates etc.	Pangbourne College Sports Hall
7.45pm	Adapted Pilates Mat Work	Vicky Elson Smith 07775638611, info@themovementclinic.co.uk	The Movement Clinic, Pangbourne
<b>Tuesday</b>			
10am-1pm	Pangbourne China Painters	Margaret broadbentm462@gmail.com	Dorman Rooms St Bernadette's Church
11am- 12pm	Yoga Yoga	www.walkingthepath.co.uk, bara.cechova@gmail.com www.walkingthepath.co.uk / bara.cechova@gmail.com	Dolphin Centre Dolphin Centre
10.15am-12pm	"One Voice Community Choir"	Di, Diane2473@btinternet.com 07971 226548 Cuppa/Chat 10.15 Singing starts at 11am	The George Hotel
7.15pm	Poker	James Blandy 07766333221, james.blandy@icloud.com	Pangbourne Club
7.30pm-8.30pm	Tennis Drills	<a href="http://www.pangbournetennis.org">www.pangbournetennis.org</a> info@pangbournetennis.org	Recreation Ground
<b>Wednesday</b>			
1pm-4pm	Pangbourne Art Group	<a href="http://pangbourneartgroup.com">pangbourneartgroup.com</a> Debbie Hildred on 07951505707 Alison Bourne on 07776 252605.	Pangbourne Village Hall
6pm	Seated Yoga	Kate 07706357801 kate.wiggins@getberkshireactive.org	St Bernadettes Church
6.20pm	Zumba	Rachel Grocott 07885 444 510, rachelzumba4043@gmail.com	Adventure Dolphin
6.30pm-7.45pm	All Comers Band	Stewart Lewins 0118 9425076, email@pangbourneband.org.uk	Pang VH
7pm	Table Tennis	info@pangbourneclub.co.uk (When the League is on)	Pang Working men's club
7.30pm-8.30pm	Yoga class	Laura 07766335176, peacelilyyoga@hotmail.com www.peacelilyyoga.co.uk	Dolphin Centre
7.30pm	Dance Fitness Class	Andrea turners.the@icloud.com, 0771 7023 007	Pang Primary
8pm	Camera Club	Alan-01491 681471, alan@curiosities.co.uk www.wotphoto.co.uk	Whitchurch VH
8pm-10pm	Pangbourne and District Silver Band	email@pangbourneband.org.uk Facebook.com/pangbourneband, Helen Pierce 07790557572, Stewart Lewins on 0118 9425076	Pang VH
<b>Thursday</b>			
10.00am-12.00pm	Art Courses	Jeanette 07500862025, art-courses@hotmail.com	Pang VH
10.30am	Adapted Pilates (Chair Based)	Vicky Elson Smith 07775638611, info@themovementclinic.co.uk	The Movement Clinic, Pangbourne
12.45pm-2.45pm	Art Courses	Jeanette 07500862025, art-courses@hotmail.com	Pang VH
7.30pm-8.30pm	AC Pilates, Mat work	Anna Cotgreave 07754598627 actraining@hotmail.com	Pang VH
7.45pm	Adapted Pilates Mat Work	Vicky Elson Smith 07775638611, info@themovementclinic.co.uk	The Movement Clinic, Pangbourne



8pm	Bingo	info@pangbourneclub.co.uk Last tickets sold 7.45pm	Pang Working Men's Club
8pm-9.15pm	Church bell ringing	Len Palfrey palfrey62@btinternet.com	St James the Less
<b>Friday</b>			
9.30am-10.30am	Kettlebell Conditioning (All levels)	Gareth France 07853 381449, gareth.france@sky.com, www.garethfrance.co.uk	Adventure Dolphin
7.30pm-9.30pm	Social Doubles	www.pangbournetennis.org info@pangbournetennis.org	Recreation Ground
8pm-10pm	Basildon Table Tennis Club	Basildontt@gmail.com	Upper Basildon Village Hall
<b>Saturday</b>			
10.30am	Zumba	Rachel Grocott 07885 444 510, rachelzumba4043@gmail.com	Tidmarsh Village Hall
1pm-2pm	Walking Tennis	www.pangbournetennis.org info@pangbournetennis.org	Recreation Ground
2pm-3.30pm	Social Doubles	www.pangbournetennis.org info@pangbournetennis.org	Recreation Ground
<b>Sunday</b>			
10am – 12:30pm	Tennis Drills	www.pangbournetennis.org info@pangbournetennis.org	Recreation Ground
10am-11am	Pickleball Coaching	www.pangbournetennis.org info@pangbournetennis.org	Recreation Ground
<b>Monthly</b>			
1 <sup>st</sup> Sunday 8pm	Jazz Night	https://www.pangbournejazzclub.com/	Pang Working Men's club
Last Sunday of the month 7pm Feb – April inc	Twinning Film Night	Steve infopangbournetwinning@gmail.com	Pang VH
1 <sup>st</sup> and 3 <sup>rd</sup> Tues 7.45pm	Natural History	Katie Jenks Jenkskatie@hotmail.com; www.rdnhs.org.uk	Pang VH
2 <sup>nd</sup> Tues 2.30pm	WI	Trish Kilgour m: 07971 442 027 email: trishkilgour@aol.com	Pang VH
2 <sup>nd</sup> Tues 8pm	RSPB	Judith email: readingsrspb@gmail.com https://group.rspb.org.uk/reading/	Pang VH
3 <sup>rd</sup> Tues 2pm-4pm	Family History Sessions	0118 9844117 – pangbournelibrary@westberks.gov.uk	Pangbourne Library
Last Tues of the month 7pm	Book Club	Pangbourne.Book.Club@gmail.com	Pang Working Men's Club
1 <sup>st</sup> & 3 <sup>rd</sup> Weds 11am	St James café	Rector 0118 984 2928 or Jill Palfrey 984 2698 jill.palfrey1@btinternet.com	St James church
1 <sup>st</sup> Weds 2pm	Cribbage	Di Williams Diane2473@btinternet.com 07971 226548	The Bar, The George Hotel
3 <sup>rd</sup> Thu Various times	Thursday Hub	Di Williams Diane2473@btinternet.com 07971 226548	The Function Room the George Hotel
1 <sup>st</sup> Fri 2pm-3pm	Book club	0118 9844117 – pangbournelibrary@westberks.gov.uk	Pangbourne Library
<b>Various</b>			
Various	Ladies Walking	Nicki Woodward. 07768 986 799 www.purleypathfinders.co.uk	Various
Various	Bowls	Alan Copeland 01491 681471 alan@alancopeland.co.uk WWW.Pangbournebowls.co.uk	Recreation Ground Thames Ave
Various	Rainbows, Brownies, Guides and Rangers	helenguides@yahoo.com	Pangbourne VH
Various	Various	Climbing Carl: hello@borntoclimb.uk 07920 444842	Dolphin Centre
Various	Various	Purley & Pangbourne Scout Group (Squirrels, Beavers, Scouts) gsl@1stpandp.org.uk	Dolphin Centre
Various	Pangbourne Paddle Sports	admin@pangbournepaddlesportclub.co.uk www.pangbournepaddlesportclub.co.uk	Dolphin Centre
Various	Bowls	Alan-01491 681471, alan@alancopeland.co.uk www.pangbournebowls.co.uk	Rec Ground Thames Ave
Wed, every other, 8pm	Camera Club	Alan-01491 681471, alan@curiosities.co.uk www.wotphoto.co.uk	Whitchurch VH
Every 2 <sup>nd</sup> Wednesday 10.30am to 12pm	Coffee Morning	Kathryn (parish office) 0118-971-5350	Dorman Room at St Bernadette's Church
School holidays	Tennis	To apply for membership please contact Andy.Crossley@pangbourne.com.	Pangbourne College

**\* Please contact Di Williams on Diane2473@btinternet.com for additions, updates or changes to the information\***

**RENEGADE**  
THE BREWERY 1ST



**DRINK COLD AND FRESH!**

Ringside views of the Brewery, fresher than fresh beer and locally sourced, freshly prepared food awaits you in our fully accessible, dog and family friendly Taproom.

- BREWERY TOURS
- BEER TASTING EXPERIENCES
- ON-SITE SHOP
- MONTHLY QUIZ
- EVENTS
- GIFTS



SCAN FOR MORE INFO





THE OLD DAIRY, YATTENDON, RG18 0XT 01635 767090 HELLO@RENEGADEBREWERY.CO.UK

**RENEGADEBREWERY.CO.UK**  **RENEGADEBREW**





DELI OPENING TIMES:

**Mon:** 9am - 4pm  
**Tues - Sat:** 8am - 5pm  
**Sun:** 10am - 4pm



RESTAURANT OPENING TIMES:

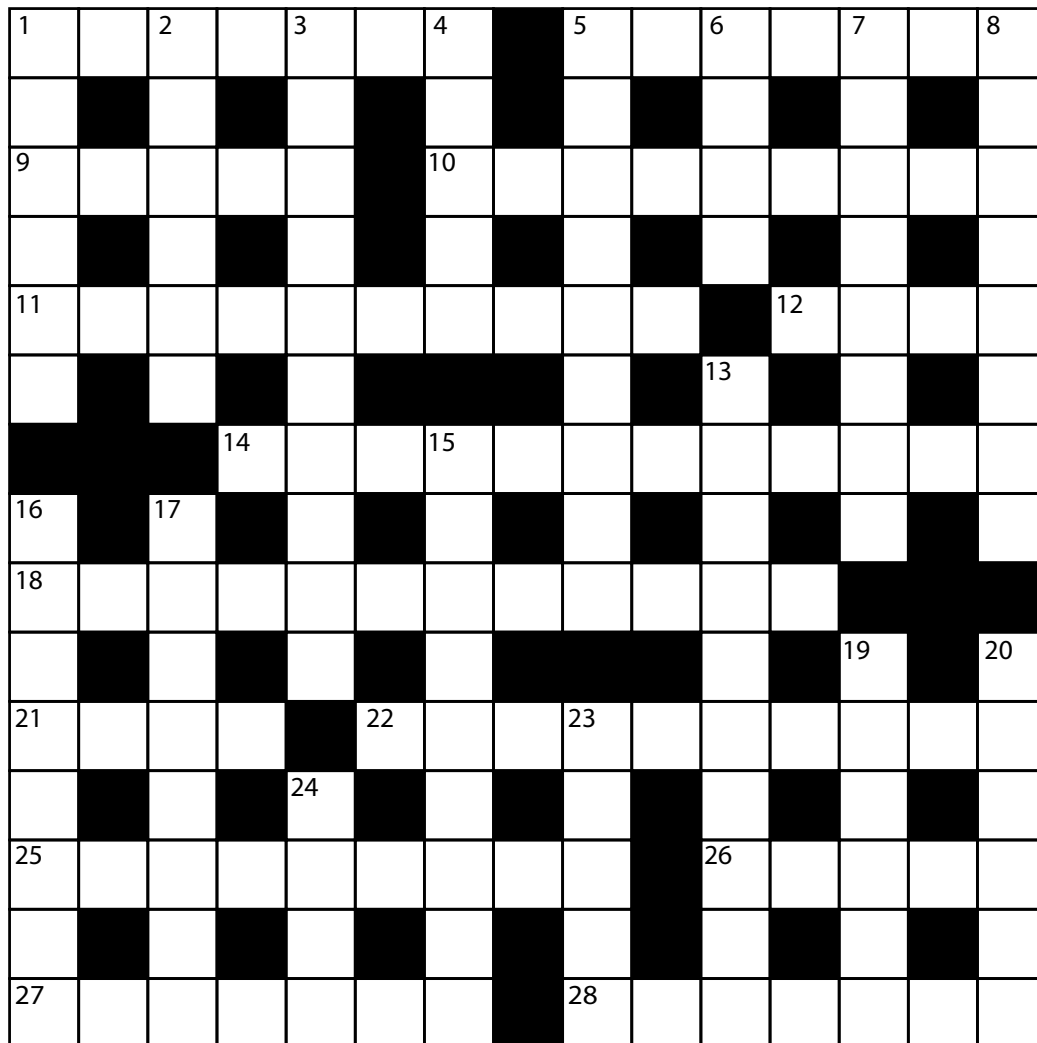
**Tues - Sat:**  
 12-2pm & 5.30- late  
 (Sun & Mon closed)





Find us online at - [www.ninosdeli.co.uk](http://www.ninosdeli.co.uk)

Call to book on - 01189 841 333



**ACROSS**

- 1 Here you just need reconsider a grade in literacy (7)
- 5 They've trumpeted, "To find us, treks in jungle are the way" (7)
- 9 Sadly, they can't say a word (5)
- 10 Gone without a trace, but now comes with a protective coat (9)
- 11 It finally comes out tops from a bovine source (5,5)
- 12 Sorry - the girl's really not all here (4)
- 14 Switched off, relaxing on board, approaching port shore (8,4)
- 18 It's a puzzle - you need to stir Ben again to get an answer. (5,7)
- 21 Get it? It's a sort of minor branch line (4)
- 22 Such an offer in that scarf range? Something smells rather good (10)
- 25 Such a clue can make and leave its mark (9)
- 26 Not something for which one would stick out one's neck (5)
- 27 The best start for the day lies in cereals - I really do mean that (7)
- 28 It's what every sweet loving bird does (7)

answer (6)

- 2 A non drinker will reach A1 status (6)
- 3 Newly qualified barrister's celebratory call to the bar? (3,2,5)
- 4 Here! Don't nag - I've registered registered as a donor (5)
- 5 They're not a class "A" sprinter in water or on land (9)
- 6 A real bargain in the tailoring world? (4)
- 7 A breathtaking clue? No - doing quite the opposite.(8)
- 8 It's certainly not the main .event (8)
- 13 Do they have a role when playing "Happy Families"? (5,5)
- 15.Vital for bovine transport - as long as it can be kept on course (9)
- 16 This ordinary sailor initially refrains from making his mark (8)
- 17 Surely one's word must be one's bond here? (8)
- 19 Where whales learn their business (6)
- 20 How wold you rate this PA's session here? (6)
- 23 Seeing the light the motorist just goes (5)
- 24 Well, if you hadn't got one, you have now (4)!

(Answers on page 50)

**DOWN**

- 1 Initially, the army's electricians and engineers have the

*Supplied by Ian Busby*

# PANGBOURNE CLUB



**Pangbourne Club comprises a cross section of the whole of the community within the village and the surrounding area.**

The club houses many activities and sub-clubs: darts, snooker, crib, bingo, quiz nights and live entertainment. We have large screen televisions and projector screens with most sporting channels available.

## UPCOMING EVENTS

### MARCH

**Sun 2nd of March**

**Jazz Night 7pm**

**Sat 29th of March**

**Soul Seniors 8pm**

### APRIL

**Sun 6th of April**

**Jazz Night 7pm**

**Sun 20th of April**

**Easter Sunday at the Club**

**Sat 26th of April**

**AJ Accoustix**

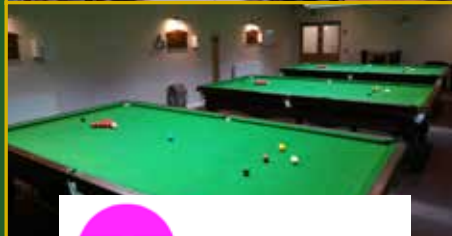
## REGULAR EVENTS

**FIND THE JOKER**

**BINGO • MEAT RAFFLE**

**POKER**

*See our website for details*



*Watch in the comfort of our fully air conditioned bars.*

## Club News

### **We are hiring!**

We are looking for talented and enthusiastic staff to join our friendly team.

See our website for details

[www.pangbourneclub.co.uk](http://www.pangbourneclub.co.uk)

**Would you like to advertise in the Pangbourne Village Magazine?**

please contact us :

Call: 0777 8900 796

Email: [magazine@pangbourneclub.co.uk](mailto:magazine@pangbourneclub.co.uk)

## Our facilities include:

- Air Con throughout
- 3 full size snooker tables
- Pool Table
- Large projector screens and TV's
- SKY Sports
- Conference Facilities
- Function Room for hire with kitchen facilities and licenced bar
- Free parking for members
- Free WiFi

## New member applications

Drop into the club or fill in our online membership application form.

***New members are always welcome.***

## Pangbourne Club

Rosewood Hall, Whitchurch Road, Pangbourne, Reading, RG8 7BS

**Keep up to date with events and entertainment by visiting our website**

[www.pangbourneclub.co.uk](http://www.pangbourneclub.co.uk) • Visit us on Facebook

e: [info@pangbourneclub.co.uk](mailto:info@pangbourneclub.co.uk) • t: 0118 9842885



## Pangbourne and Whitchurch Sustainability News

**T**he New Year has arrived in the middle of a miserable cold, wet, grey winter. A series of storms throughout December and January have caused damage to trees across the west and northern parts of the country and many people are enduring the heartbreak of homes flooded and businesses closed. The water table remains so high that the woodland alongside the Tidmarsh Road resembles the Florida swamps. Not all of this is new, the country has suffered extreme weather events in the past, but what is noticeable is that there is much less time between events. We have entered a new era and require a new mindset to withstand this change. There is unequivocal evidence that economies based purely on profit motive fail to admit and in many instances deny the harmful impact of the race to wealth accumulation.

### Our Toxic World

One of the most influential environmentalists, Rachel Carson, writing in her book *Silent Spring* published in 1962 exposed the damage caused to the natural world by the indiscriminate use of DDT and other pesticides. She was concerned about the eight million hectares across the southern states of America which had been sprayed by the American Department of the Environment with these chemicals with a resulting alarming drop in numbers of the bald eagle. She warned that 'if the rate of chemical contamination of the planet continued, insect and birdsong, animal life, even the quieting of humanity, would result in a silent world'. The chemical industry was furious and contemptuous of her outspokenness. They attempted to sue her, and discredit her scientific authority. A letter published in the *New Yorker* magazine said 'we can live without birds and animals but as the current market slump shows we cannot live without business... as long as we have the H-bomb everything will be ok'. (Frostquake, *How the Frozen Winter of 1962 Changed Britain Forever* by Juliet Nicholson)

Why is this relevant to us today? Because that despite years of scientific advice concerning the neonicotinoid pesticide Cruiser SB, which is used on sugar beet, and is highly toxic to bees, we in the UK have only just ruled that we will not agree to its 'emergency use every year'. It has been banned in the EU for several years and despite the

advice of the Health and Safety Executive (HSE) the previous government repeatedly agreed to its use. Professor Dave Goulding, a bee expert at the University of Sussex, has warned that one teaspoon of the chemical is enough to kill 1.25bn honeybees. One can only wonder why despite all the evidence of the extreme toxicity of this chemical it remained in use until this year.

### Bee and wildlife friendly planting

You may remember that we are monitoring for the presence of Asian hornets in our area as these are a threat to our honeybees. Climate change has led to the increasing presence of these insects in the UK, but the vigilance of 'bee protectors' is slowing down their progress. Bees are vital to our existence and we are delighted that there is a ban on their chemical extermination, but we have to work hard to encourage and support the growth of new populations of them and all insects. This is why we plan to have an event where experts can teach us what to plant and how to garden with our insect world in mind. We hope this will be a stepping stone to our villages committing to being Bee and Wildlife friendly in areas of communal planting.

### Kerbside Recycling in West Berkshire

In January in Pangbourne, West Berkshire introduced much improved kerbside recycling. We are now able to recycle clean plastic pots, spread tubs, ready meal trays, take away tubs, clear fruit punnets, biscuit tray packaging, and clean meat trays by placing them in the green bags already provided. We are advised to squash items such as plastic bottles to create more space, but if you need an additional bag order one at [www.westberks.gov.uk/requestabin](http://www.westberks.gov.uk/requestabin).

Additionally, just a reminder, we can leave textiles, in a clear white plastic bag labelled textiles next to the green boxes for collection. We can also put used household batteries in a clear bag and place them on top of the black wheelie bin. This also includes hearing aid batteries. For full information re batteries that can be recycled check on the West Berks recycling leaflet

### Coop recycling.

As you know the Coop provides a soft plastics recycling service. For a full list of what the Coop takes go to <https://www.coop.co.uk/environment/soft-plastics/packaging-list>

### Tetrapak recycling

We will still need to take tetrapak cartons to the recycling facility in Theale

### Small item recycling

For many years St James Church in Pangbourne offered a monthly recycling service for a variety of smaller things. Martin Holliday who organised this is now unable to carry on with this. Would anyone else like to pick up the baton? Our neighbours in Purley offer a monthly recycling service for things like metal foil, bottle tops, stamps, watches, etc. I am certain the volunteers who run this service would be happy to advise if we can find volunteers in Pangbourne and Whitchurch.

### Planned Events for the coming year

In January PAWs held a lively planning evening with ideas coming in thick and fast! We celebrated the fact that we now have money to buy our own apple press and swift boxes. Our annual apple pressing will take place in the maze in Whitchurch in September. As a response to high demand we will run the barn dance again in October and the hay meadow walk in June. We are arranging a

talk on bee-friendly gardening in March, and the topics of Energy Security, the government's Green Agenda and Local Rewilding will be covered during the year.

There are always unknowns when political, philosophical, economic changes take place in our world. Who knew how industrialisation would impact the natural world? Who knew that the globalisation movement, based on intensive trading would incur such human and planet destabilisation? We do now know and are experiencing the harmful effects of our failure to respect nature. We can all do something to mitigate the harmful effects of carbon emissions and smaller communities like ours can be the leading lights in transforming the relationship between ourselves and the natural world.

*pawsg21@gmail.com*

*Heather Thorne*

## Forthcoming events

When	What	Where
Tuesday 25th February 6.30-8.30pm	ARK Meeting James Hubbard along with a range of speakers will be discussing WQ testing, the Sulham wetland creation, water vole surveying, riverfly monitoring and more! Advanced booking through Eventbrite essential,	Pangbourne Village Hall
Thursday 13th March	Insect friendly Gardens	TBC
Saturday 5 <sup>th</sup> April	West Berks Green Exchange, Green Fest (more details to follow)	St Bartholomew's School, Newbury
Sunday 27 <sup>th</sup> April 10am – 12 noon	Pangbourne Parish Litter picking, supported by PAWS. Bags, gloves, and pickers available, please report to the registration desk	Chiltern Way, (near the Asda petrol station)
Thursday 22 <sup>nd</sup> May 8 8pm =10pm	AGM TBC	Pangbourne Village Hall
Saturday 14 <sup>th</sup> June 10am – 5 pm	Pangbourne Fete Recycling bins and a stall Need Volunteers	Pangbourne recreation ground
Sunday 22 <sup>nd</sup> June 2pm – 4pm	Join with WoTHabs for a Meadow Biodiversity Walk led by James Norman	Meet at the field entrance on the left-hand side of Sheepwash Lane, Hardwick Estate
July	Meeting with MPs. TBC	
Sunday 21 <sup>st</sup> September 2pm – 4pm	Apple Pressing Day at Whitchurch Maze	Muddy Lane Whitchurch on Thames
Saturday ? October 8pm – 11pm	Barn Dance (more details to follow)	Pangbourne Village Hall TBC
Sunday 12 <sup>th</sup> October 10am – 12 noon	Pangbourne Litter Picking Please report to the registration desk	Chiltern Way, (near the Asda petrol station)
Thursday 20 <sup>th</sup> November 8pm – 10pm	Film Night (more details to follow)	Pangbourne Village Hall TBC
Thursday 11 <sup>th</sup> December 8pm – 10pm	Christmas Gathering	Pangbourne Village Hall TBC
Thursday 15 January 2026 8pm – 10pm	PAWS 2026 Planning Meeting	Pangbourne Village Hall TBC

**Join our Facebook group: PAWS (Pangbourne & Whitchurch Sustainability) or visit [pawsg.com](http://pawsg.com)**



## Marcher et Parler

**W**ith the weather as it is and with so much mud everywhere, continuing with our “Marcher et Parler” (walk and talk) hikes have proved quite a challenge. We have decided that we will sometimes walk on a Tuesday morning and sometimes on a Thursday morning depending on the weather and who is available. We usually walk between 2 and 4 miles locally with a coffee or lunch to follow.



We try to speak some French as we go but it is not very serious and it does depend on how slippery the terrain is. If you would like to join us or just come and try one walk please send me your phone number on an email to the Twinning and I can send you details of the next rendezvous. [infopangbournetwinning@gmail.com](mailto:infopangbournetwinning@gmail.com)

### Film nights

Our film nights continue at the Pangbourne village hall on the last Sunday of the month. Doors open at 6.45pm with a bar available until the film begins at 7.30pm.

We have two more films this season.

### 30th March, Demoiselles de Rochefort

Twins Delphine and Solange, a dance instructor and a music teacher (played by real-life sisters Catherine Deneuve and Françoise Dorléac), long for big-city life; when a fair comes through their quiet port town, so does the possibility of escape. With its jazzy Michel Legrand score, pastel paradise of costumes, and divine supporting cast (George Chakiris, Grover Dale, Danielle Darrieux, Michel Piccoli, and Gene Kelly) it is one not to be missed.

### 27th April, Sarah's Key

One of the darkest moments in French history occurred in 1942 Paris when French officials rounded up over 10,000 Jews and placed them in local camps. Eventually, over 8,000 were sent off to German concentration camps. As 10-year-

old Sarah (Mélusine Mayance) and her family are being arrested, she hides her younger brother in a closet. After realizing she will not be allowed to go home, Sarah does whatever she can to get back to her brother. In 2009, a journalist named Julia Jarmond (Dame Kristin Scott Thomas) is on assignment to write a story on the deported Jews in 1942. When she moves into her father-in-law's childhood apartment, she realizes it once belonged to the Strazynski family, and their daughter Sarah.

### Art Cafe

We continue with our fundraising with a Saturday morning Art café at the Stables Hall in Whitchurch on the 29th March. Do come along for a hot drink and a homemade cake.

### Visit from Houdan

All the fundraising does of course pay for the visit of our lovely friends from Houdan who will be here from Thursday 1st of May to Sunday 4th of May.

### Draft programme so far:

1st May (pm) Coach arrives from France. Welcome reception and host allocation at the village hall.

2nd May Excursion to Winchester including a tour of Winchester college and Winchester Cathedral.

3rd May Tennis and Bowls morning and lunch.

Have a go at Pickle ball, walking tennis or play in a fun American tournament for regular players.

Celebration meal for all involved with the exchange in the evening.

### 4th May (am) Coach and visitors depart for France.

We are still looking for host families or individuals who can accommodate individuals, couples or a family. This is a fabulous opportunity to make new friends and the chance to return to Houdan next Spring.

### You do not need to speak French

Please do contact us if you would like to host or like to know how it works or if you would like to join in with any of our activities. Membership is free and open to people of all ages.

[infopangbournetwinning@gmail.com](mailto:infopangbournetwinning@gmail.com)

We hope to see you at one of our events soon.

## BUY & SELL

@ Pangbourne Village Magazine  
Would you like to buy or sell items?  
[magazine@pangbourneclub.co.uk](mailto:magazine@pangbourneclub.co.uk)



### Reading RSPB Group Activities

**O**n Tuesday 14 January we launched our 2025 indoor programme with a very informative and extremely entertaining talk on the Wildlife of the Chilterns by Jon Mason. Jon is a very experienced birder, naturalist, writer and geographer, a subject which he has taught in school for many years. He is active online and on social media as theearlybirder and describes himself as “crepuscular” with early morning and dusk being his favourite times for getting out into nature.

He lives in the Chiltern Area of Outstanding Natural Beauty, recently renamed Chiltern National Landscape, and has explored the area in depth over the years. Indeed, two years ago he visited 83 BBOWT (Berkshire, Buckinghamshire and Oxfordshire Wildlife Trust) nature reserves in one year.

The Chilterns are made of chalk which overlies clay, and it is famous for its chalk streams and for a wide range of orchids and other wild flowers which thrive on chalk. The area also has a wide variety of habitats including chalk grassland, woodland, especially beech woods, arable/pastoral land and wetlands.

The wetland areas include reservoirs and lakes formed from flooded gravel pits. College Lake was created thanks to Graham Atkins who worked for Blue Circle and persuaded them not to fill in the spent gravel pit but to flood it and turn it into a nature reserve. It now attracts a wide range of bird species as well as polecats and lizards and in spring and summer has glorious fields of wildflowers, including the once common field cow wheat which now grows only at College Lake and one other site.

Weston Turville and Wilstone reservoirs boast such species as Water Rail, Kingfisher and Red-Crested Pochard as well as a range of wintering ducks, while such treats as Black Redstart can be found at Chinnor and Hawfinches in Great Hamden churchyard.

Dockey Woods, Ashridge, are famous for their Bluebells as well as having resident Dormice (also to be found in Jon’s loft!) and neighbouring woods are full of Wild Garlic and Winter Aconite and the presence of Wood Sorrel indicates that these are remnants of ancient woodland.

Despite the variety of wildlife on offer there are signs of decline not only in biodiversity but in bioabundance. Populations of both Hares and Rabbits are declining due to haemorrhagic

disease and Myxomatosis which has spread from Rabbits to Hares; Curlew and Lapwing which once bred in abundance in the Vale of Aylesbury have all but vanished. Ash dieback has affected some areas of woodland although some surviving trees give hope of resistant strains. But we ended the evening inspired by Jon’s enthusiasm and depth of knowledge and full of ideas for exploring more of an area which starts on our doorstep in Goring and extends for 45 miles to Hitchin.

On Sunday 19th January we met at Wilstone Reservoir near Tring. We walked from the car park to the hide seeing a Great White Egret on the other side of the lake and two pairs of Goldeneye swimming close to us, with many Tufted Ducks and Pochard. From the hide we saw numerous Wigeon, Lapwing and a small group of Snipe huddled under the bushes. A Green Sandpiper and Little Egret also appeared briefly. We then headed round the lake, stopping at a nearby Farm Shop cafe for a welcome coffee. We then walked along the disused canal to Tringford reservoir and back, adding a couple of Fieldfares and a Grey Wagtail amongst others. In total we recorded 38 species.

On Tuesday 21st January we went to Bray Gravel Pits near Maidenhead for a walk round the two pits there. The main sailing lake held lots of Coots, a few Great Crested Grebes and a few Tufted Ducks on the far side. The smaller lake is used mainly for fishing which means it should be quieter, and we did see a Pochard with the Tufted Ducks and a pair of Gadwall. We saw a number of Long-tailed Tits in the scrub round the lakes along with Blue and Great Tits. On the main lake we also found two Common Gulls amongst the Black-headed Gulls. A pleasant walk in which we recorded 24 species.



*Grey Wagtail by Marilyn Hockey*

On Tuesday 11 February there will be a talk by award-winning photographer Tom Way on Exciting Wildlife around the World.



Outdoor trips in February include a minibus trip to Rainham Marshes on Sunday 16 February and a morning walk at Hosehill Lake on Wednesday 19 February.

On Tuesday 11 March we will have the second part of Peter Holden's Inspired by Birds.

March's outdoor trips include a visit to Fleet Pond on Sunday 16 March to look for early migrants and on Tuesday 18 March there will be a morning walk in Swinley Forest to look for Woodlark, Crossbill and Dartford Warbler.

On 8 April group member David Massie will present a talk on a recent trip to Thailand. Outdoor trips in April include a walk on Sunday 13 April at Aston Rowant looking for woodland and farmland birds and a visit to Blackbushe and Yateley Common on Wednesday 23 April.

All indoor meetings are held in Pangbourne Village Hall starting at 8pm. Visitors are very welcome. There is an entrance fee of £5 for non-members, junior's half price. New members are always welcome with annual membership set at a modest £15 (£10 for juniors).

*For more information visit [group.rspb.org.uk/reading](http://group.rspb.org.uk/reading)*



**ARCHITECTURE & INTERIOR DESIGN**

DESIGN - DEVELOP - DELIVER

Planning - Building Regulations  
Project Management

Contact us on 01844281715  
or via email: [info@al3d.co.uk](mailto:info@al3d.co.uk)  
[www.al3d.co.uk](http://www.al3d.co.uk)

We supply lattice top, v arced, square, horizontal, diamond, lattice panels. Round pointed and square top picket fencing with matching gates. We can also manufacture any size to fit with your requirements.

# FENCE it DIRECT LIMITED

Panels • Posts • Gates • Sleepers • Decking • Trellis



**Supply and Fit Available!**

What ever the project give us a call  
and start saving money on these quality products

**0118 984 2838 • 07961 833665**

Fence it Direct Ltd, Bowden Side Farm Nurseries RG8 8PU  
[www.fenceitdirect.co.uk](http://www.fenceitdirect.co.uk) [info@fenceitdirect.co.uk](mailto:info@fenceitdirect.co.uk)





**E. A. LAMING**  
**FLAT ROOFING**

15 years guarantee on all high performance felts  
 also  
 Tiling and Lead Repairs

Phone Bradfield 0118 9744701 or 07880 930 958  
 Email: eddylaming@hotmail.co.uk  
 38 years experience



Would you like to advertise in the  
 Pangbourne Village Newsletter,  
 please contact us :  
 Call: 0777 8900 796  
 Email: newsletter@pangbourneclub.co.uk

**PAULBELCHER**  
 PROPERTY SERVICES OF PANGBOURNE

**T 01189843722 M 07888680834**  
 paulbelcherpropertyservices@yahoo.co.uk 



**Chiropractic  
 the McTimoney  
 Way**

for people and  
 small animals

Multi-disciplinary clinic offering integrated  
 health care in a friendly, relaxed setting

**Chiropractic  
 Podiatry & Foot Health Care  
 Sports Therapy, Soft Tissue Therapy**

*Suitable for all ages. Free spine check available.  
 Evening and weekend appointments available.*

**For Health Chiropractic**

**0118 984 3473**  
 Unit 2, The Old Mill  
 61 Reading Road  
 Pangbourne  
 RG8 7HY  
 www.forhealthchiropractic.co.uk

*Release your  
 body's true  
 potential*




**The Loose Larder**  
 Refill Store & More

Come and try our small, friendly refill store in the  
 heart of Pangbourne. We stock a wide range of  
 unpackaged foods such as pasta, rice, grains, cereals,  
 nuts & seeds, herbs & spices, frozen fruits &  
 vegetables, loose tea plus many other interesting  
 goods and gifts.

Come and visit us at 15 Reading Road, Pangbourne  
 Find us on Facebook, Twitter or Instagram  
 @loose\_larder



**PANGBOURNE**  
 — Independent, co-educational boarding and day school, ages 11-18 —

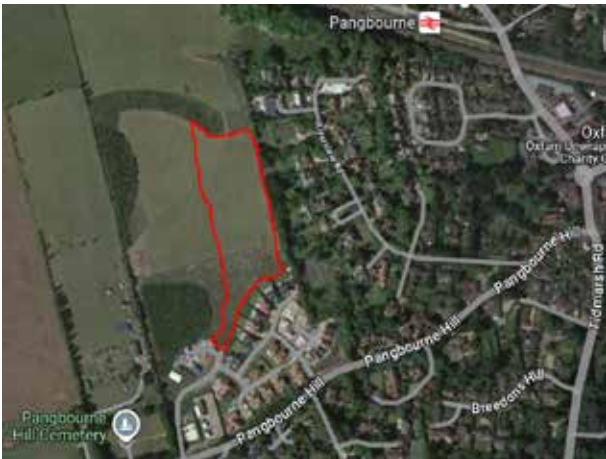
**VISIT US**  
 Find out about our events:  
 pangbourne.com/visit  
 0118 976 7415  
 admissions@pangbourne.com






## Newbury News from Cllr Matt Shakespeare

As I write this at the beginning of December, we have already seen flooding on Pangbourne river meadow and across Mill and Sulham lanes. The floods at the beginning of 2024 caused damaged to the Swan and the Adventure Dolphin, but thankfully very few homes. Unfortunately, this was not the case in many other parts of West Berks. A lot of work has gone on at the council in partnership with the Pang Valley Flood Forum and other agencies to increase resilience against future flooding. As a good scout I know the most important point is to Be Prepared. The council has a lot of good information available online at [www.westberks.gov.uk/flooding](http://www.westberks.gov.uk/flooding) including guidance on how to keep up to date with flood warnings, how to prepare and who is responsible for what. Please do review it and think how you can prepare for a potential future flood.



The local plan sets the policies that govern development across the borough, it also determines the number of houses that should be

built. The West Berkshire local plan is currently being reviewed by the planning Inspectorate. The Secretary of State for Housing, communities and Local government, Angela Rayner has increased the target of new homes to be built in West Berkshire from 495 to 1057 each year. In response several potential new sites for homes have been identified. In Pangbourne, a site for up to 25 new homes behind Sheffield Close has been included in the draft plan. The local plan now goes out for consultation, please look out for this consultation and let the council and the planning inspectorate know your thoughts. The latest information is available at [www.westberks.gov.uk/lprexamination](http://www.westberks.gov.uk/lprexamination)

Our council is working hard to make it easier for people to recycle, by increasing what can be recycled and collecting more items from your regular kerbside collection. We recently held a consultation on what more we can do and had over 5,000 responses. One of the recent improvements is that batteries can now be recycled by putting them in a clear bag on top of your black bin on rubbish collection days. The recycling fleet has also become greener with new vehicles powered by recycled cooking oil. This will reduce our carbon output by 230 tons a year, or the equivalent of 100 return flights from London to New York. Lookout for another big expansion of what we can collect in the new year.

In October West Berks fixed 260 potholes, cleaned 2,066 gullies and repaired 67 streetlights. If you have a problem with any of West Berkshires services you can let the council know via the report-a-problem service [www.westberks.gov.uk/reportaproblem](http://www.westberks.gov.uk/reportaproblem). If I can be of help please get in touch with me at:

[matt.shakespeare1@westberks.gov.uk](mailto:matt.shakespeare1@westberks.gov.uk)



A personal service for all your accounting and taxation needs

Personal Tax Returns  
Annual Accounts  
Company Formation  
Business Start Ups  
Capital Gains Tax  
Company Taxation

Xero and Sage Specialists

To arrange a free initial meeting please  
call us on 0118 984 1556 or email [post@geoffreycollection.co.uk](mailto:post@geoffreycollection.co.uk)

Corporate Structuring  
Rental Property Matters  
Auditing  
VAT  
Share Option Arrangement  
Taxation Planning and Advice



[www.geoffreycollection.co.uk](http://www.geoffreycollection.co.uk)

## FREE COMPOST

At St James we have some very full compost bins containing well matured, ready to use compost for your garden or allotment. We would love to give this away so please collect from the top south west corner of the churchyard. Bring your own bags or a wheelbarrow. If you need to park to do this let us know and we will make the lay-by outside church available.

We shall soon be filling these bins again as Green Gym starts on Saturday 15th February after a short break. If you can help maintain our lovely churchyard please come along on either the first Thursday or third Saturday morning of each month from 9.30am to approximately 12 noon. Tools and refreshment provided. Our dedicated volunteers would be delighted to have some help.

If you have any queries please contact me by email at: [palfrey62@btinternet.com](mailto:palfrey62@btinternet.com)



Are you affected by  
Polymyalgia Rheumatica (PMR)  
or Giant Cell Arteritis (GCA)?

### New Pangbourne Support Group

Would you like to meet others living with the same condition for support and companionship?

Email us on [pangbourne@pmrgca.org.uk](mailto:pangbourne@pmrgca.org.uk)  
or call 0300 999 5090  
for the date, time and location  
of our support group meeting

*Please check the website for latest information*



[www.pmr-gca.org.uk](http://www.pmr-gca.org.uk)



To help protect you, your family, estate and business when planning for the future or if the unforeseen happens, Christopher Lawn provides a local, professional and expert service tailored to your needs – and without the big city fees.

### Special Offer

10% of cost of basic Will or LPA  
(excl VAT) to go to  
CancerResearch, offer open till  
31st May 2024  
quote code "RFL5"



Do You Need A Will, Power of Attorney or Help With Probate?

Call 07843 679239 | Email [chris@jonathanlea.net](mailto:chris@jonathanlea.net) | Visit [www.chrislawn.com](http://www.chrislawn.com)



Consulting Solicitor through Jonathan Lea Network Solicitors [www.jonathanlea.net](http://www.jonathanlea.net)

## Bring nature Into your house

If I'm asked if I would ever return to living in a town, my answer is always an emphatic "no". Ok, I do miss easy access to a delicious restaurant, but I was born in the countryside, live in the countryside and work in the countryside, and that is for one very good reason... nature is beautiful, and it makes me feel good.

Of course, it's now scientifically proven that a connection with nature improves our mental and physical health. Research revealed that exposure to a diverse range of natural features reduces stress, mental fatigue, improves cognitive function and even promotes creativity.

No wonder those long walks around Pangbourne's surrounding countryside, leaves us feeling better, but we don't need to leave that feeling behind when we step through our front door. Biophilic design (bringing our connection with nature indoors) has rooted itself in modern day architecture and interior design, helping create that same feeling inside. It's achieved by some simple principles and the use of sustainable materials.

So, where to start? We might be lucky enough to have large windows, countryside views and an abundance of light which is a major plus, but in our pretty villages with old houses, that's not always a possibility. In which case it's all about mimicking nature using light, colour, texture and form.

### Access to nature

Consider the views you have of the outside, from within your home. A richly planted courtyard, a terrace with small a ornamental tree, shrubs and flowers, or even a window box is a great first step. Scented plants that can waft through open windows (when our weather allows).

### Indoor Plants or Flowers

A simple vase of fresh flowers or a few good architectural plants at eye level will also trigger a connection. They're also perfect at softening a space, adding texture and visual interest.

### Colour

There's such a thing as colour psychology. For example, green induces feelings of tranquillity, harmony and peacefulness, blue... serenity and calm. Colour drenching is popular currently but use with caution... too much of a colour can have negative impacts, it's all about balance.

### Natural Materials

Stone, clay, wood, bamboo, cork (anyone from the 70's... scratch that orange memory, there's some

beautiful products now), wools, linens, sisal and jute can be used across a variety of surfaces, furniture and accessories. if you're worried about stain resistance there are some fabulous alternatives made from recycled materials, to shrug off those paw marks.

### Pattern

Naturalistic patterns vary hugely from botanicals, birds or animals, to complex geometrics and spirals. Use them through wallpapers, artwork, soft furnishings and accessories.

Whether it's a quaint country cottage, a grand Georgian house or a bold Scandinavian boat house, there's a biophilic design just waiting to come in.

**Samantha Fleming Interiors Ltd 'Sustainable boutique interior design for country properties'**



**SAMANTHA FLEMING**  
INTERIORS

Sustainable boutique interior design for  
country properties

Architect Plan Reviews, Interior Design Services including:  
Concepts & Mood Boards, Soft Furnishings, Lighting Design,  
Space Planning, Furniture & Accessories Selection  
Kitchen & Bathroom Design Consultancy.  
National Design Academy Qualified.



<https://samanthafleming.co.uk>  
 07588 489156  
[hello@samanthafleming.co.uk](mailto:hello@samanthafleming.co.uk)

 @samanthafleminginteriordesign  
 @samanthafleminginteriors  
 @samanthafleminginteriors



CREATESPACE DESIGN

---

**MAXIMISE THE POTENTIAL OF YOUR HOME**

- CONVERT      - REMODEL  
- EXTEND        - UPDATE

LUCY - DESIGN & PLANNING SERVICES FOR 20+ YEARS

☎ 07747 056193 ✉ [lucy@createspacedesign.uk](mailto:lucy@createspacedesign.uk)

### USEFUL NUMBERS

POLICE Non-emergency number ..... 101

CRIMESTOPPERS .....0800555111

PANGBOURNE PARISH COUNCIL (at Village Hall)  
 www.pangbourne-pc.gov.uk..... 011898 41118  
 Parish Office opening hours- by appointment

CHAIRMAN OF PANGBOURNE PARISH COUNCIL  
 Ian Walker- iwalker@pangbourne-pc.gov.uk

VICE CHAIRMAN OF PANGBOURNE PARISH COUNCIL  
 John Higgs- jhiggs@pangbourne-pc.gov.uk

CLERK OF PANGBOURNE PARISH COUNCIL  
 Becky Elkin- clerk@pangbourne-pc.gov.uk

WEST BERKSHIRE COUNCIL  
 Switchboard ..... 01635551111  
 Councillor Matt Shakespeare- matt.shakespeare1@westberks.gov.uk

CITIZENS ADVICE BUREAU..... 01635516605

MP FOR READING WEST  
 Olivia Bailey ..... Olivia.Bailey.mp@parliament.uk

SURGERY ..... 01189842234  
 Emergency out-of-hours (6.30pm-8am) ..... 111

PHARMACY ..... 01189842935

LIBRARY..... 01189844117

PANGBOURNE DISTRICT VOLUNTEER CENTRE..... 01189844586

PANGBOURNE PARISH PRIEST  
 Reverend Mark Hopkins- rector.ptschurches@gmail.com

FLOOD WARDENS  
 Kay Lacey ..... 07889231136  
 Stephen Billyeald..... 01189843368  
 Ed Penney ..... 07756432946

#### Crossword Answers

##### ACROSS

1 READING, 5 TUSKERS,. 9 MUTES, 10 VARNISHED, 11 DAIRY CREAM, 12 ALAS 14 COASTING INTO,18 BRAIN TEASING, 21 TWIG, 22 FRAGRANCES, 25 INDELIBLE 26 NOOSE, 27 SINCERE, 28 NESTLES

##### DOWN

1 REMEDY, 2 ATTAIN, 3 IT'S MY ROUND, 4 GIVER, 5 TERRAPINS, 6 SNIP, 7 EXHALING, 8 SIDESHOW, 13 AGONY AUNTS, 15 STEERABLE, 16 ABSTAINS, 17 BASILDON, 19 SCHOOL, 20 ASSESS, 23 GREEN, 24 CLUE=

# Residential Care Home For The Elderly



- Specialising in 24 hour Dementia and Old age Care
- Respite Care
- Long-term Residential Care
- Daycare
- Victorian country house set in beautiful grounds, located on a private road in Goring On Thames
- Gold standards framework commendation for end-of-life care
- Enriching and Empowering the lives of the local community for over 40 years

**01491 873588**

[office@cleevelodge.co.uk](mailto:office@cleevelodge.co.uk)

[www.cleevelodge.co.uk](http://www.cleevelodge.co.uk)

Cleeve Lodge, 11 Elmhurst Rd  
Goring, Reading RG8 9BN



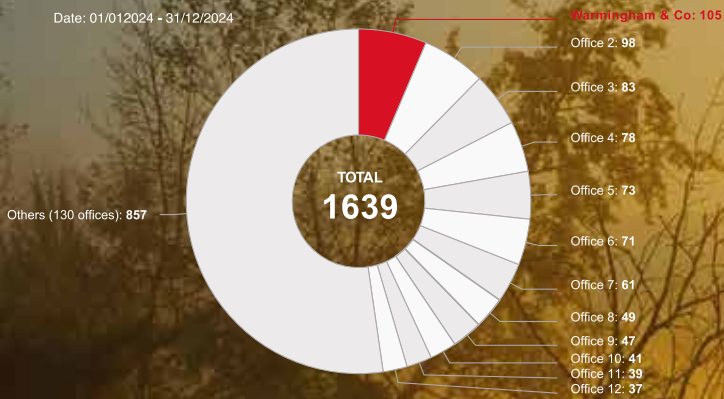
# Warmingham

www.warmingham.com

*Your leading independent property consultancy....*

## Sales

Date: 01/01/2024 - 31/12/2024



1<sup>st</sup>

out of  
142 offices

Warmingham & Co

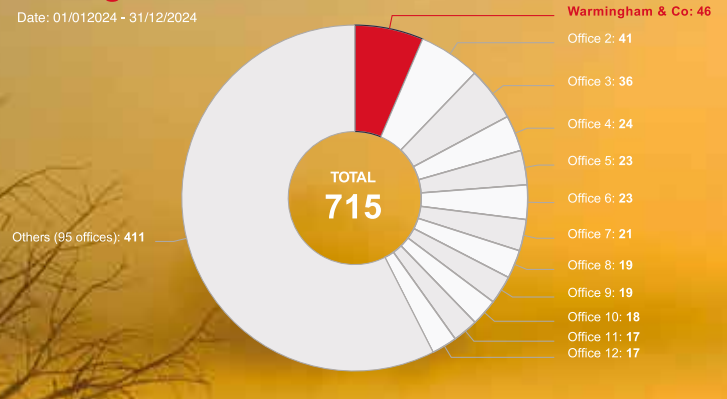
Goring-on-Thames

4-5 High Street  
Reading RG8 9AT

insights brought to you by  
**rightmove**

## Lettings

Date: 01/01/2024 - 31/12/2024



1<sup>st</sup>

out of  
107 offices

Warmingham & Co

Goring-on-Thames

4-5 High Street  
Reading RG8 9AT

insights brought to you by  
**rightmove**

**Having celebrated successive record breaking years in 2016, 2017, 2018, 2019, 2020, 2021, 2022, and 2023, we've done it again in 2024!** Having been established for over 40 years, we don't rest on our laurels; Leading by the front, achieving the very best for our clients. For a 9th consecutive year, 2024 has seen Warmingham & Co, out-sell and out-let all of our competitors within our area of coverage\*, as recorded by Rightmove. Accordingly, you can be assured of a professional and thorough approach from our highly qualified and experienced, personable staff, who both understand the current marketplace, and yield extensive local knowledge. Offering our clients the most effective, cohesive and progressive marketing package tailor-made to their own individual requirements, locally, nationally, and internationally, 7 days a week, we are here to make your next move both seamless, and the right one for you.

OX10 0, OX10 6, OX10 9, OX11 0, OX11 9, OX49 5, RG18 0, RG18 9, RG20 6, RG20 7, RG20 8, RG4 7, RG4 9, RG7 5, RG7 6, RG8 0, RG8 7, RG8 8, RG8 9, RG9 4, RG9 5, RG9 6.

Sales & Valuations

T 01491 874144

E sales@warmingham.com

Call us **7 Days A Week** to arrange a Free Valuation or Viewing

Office Opening Hours: **Monday - Saturday: 09:00 - 18:00 & Sunday: 10:00 - 16:00**

Website Opening Hours: **24 Hours A Day - 7 Days A Week - 365 Days A Year**

Lettings & Valuations

T 01491 875011

E lettings@warmingham.com



Bob  
Warmingham



Tonia  
Sheldon



Duncan  
Kent



Karen  
Spiers



Laura  
Rosi



Paul  
O'Loughlin



Louise  
Pasker



Naomi  
O'Loughlin



Arun  
Readings



Sue  
Warmingham